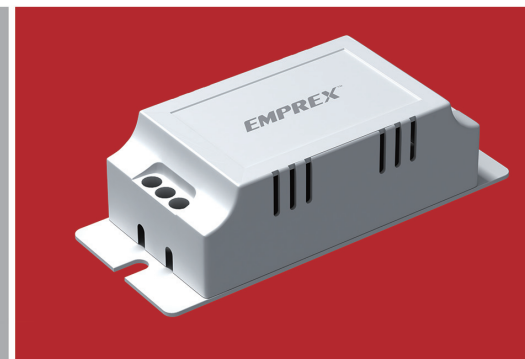
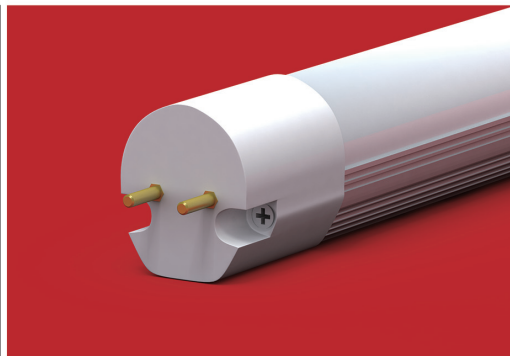
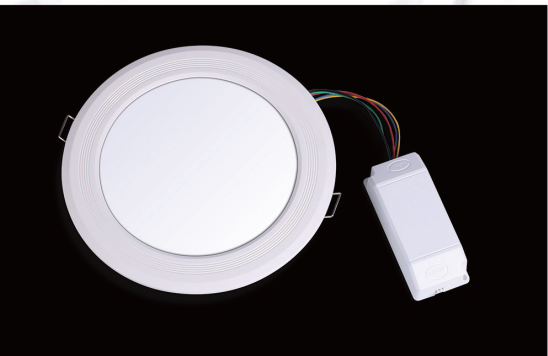


EMPREX™



**Switching the light on
the world. Adding the
shine in your life.**



CE

LVD

FC

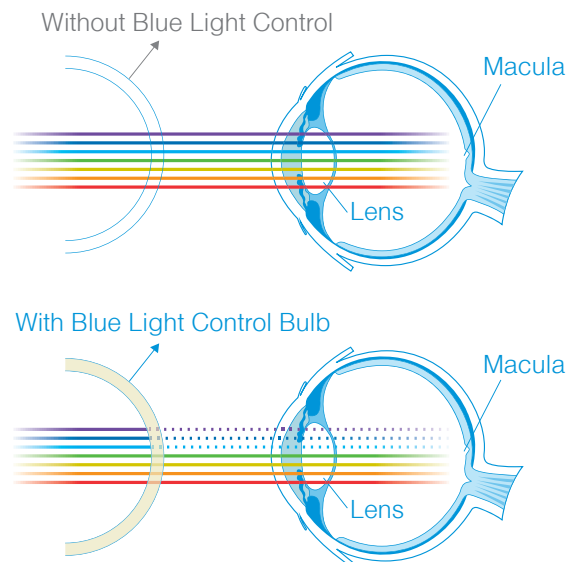
BEHAVIOR TECH COMPUTER CORP.

20F., No.98, Sec. 1, Xintai 5th Rd., Xizhi Dist.,
New Taipei City 22102, Taiwan (R.O.C.)

TEL: (886)-2-2696-1888 FAX: (886)-2-2696-1899

E-mail: sales@btc.com.tw

■ Blue Light Blocking Systems



- Input Voltage: 110~240VAC.
- Blue light blocking up to 30%.
- Quick lighting on, no warm-up delay, no flicker.
- No UV and IR.
- Lower power consumption, save more energy than traditional bulb.
- Recycle materials, meet ROHS compliant.
- Able to be used in office illumination, home illumination, building construction or decoration illumination etc.

LED Bulb



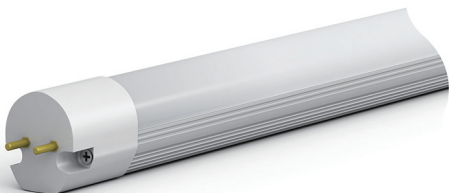
Model Name	BI08-120-Blu	BI08-100-Blu
Color Temperature	2900K/5500K (Typical)	2900K/5500K (Typical)
Input Voltage	110~240V	110~240V
Power Consumption	12 Watt	10 Watt
Power Factor	90% (Typical)	90% (Typical)
Lumen	900/1000 lm(Typical)	800/900 lm(Typical)

Special design for desk light



Model Name	BI01-E27-036
Color Temperature	5500 K
Socket Type	E26/E27
Dimension	φ 60mm x 103 mm
Input Voltage	110~240Vac
Power Consumption	3.6 Watt (Typical)
Weight / Unit	35g
Illumination Angle	180°
Lumen	300 lm (Typical)
Color Rendering Index	> 90% (Typical)

LED Tube



Specification	LI06-1198-IO-Blu	LI06-580/590-IO-Blu
Color Temperature	5500K	5500K
Dimension	φ30mm x 1198 mm	φ30mm x 580/590 mm
Input Voltage	100~310 VAC	100~310 VAC
Power Consumption	18W	9W / 20W
Power Factor	90%	90%
Lumen	1800 lm	900 lm / 1800lm

RF Control

RF BOX

- Microwave motion detection and auto switching power on/off.
- Input/Output power: 100~310Vac.
- Adjustable for sensitivity of motion detection.
- Adjustable for active time of light on.
- Lower power consumption, save more power with light control.
- Recycle materials, meet ROHS compliant.
- Suitable for public area, parking, garden, school, factory, building, warehouse etc.



RF detect control	AC power output control	AC power output control	DC control for HBL
Input/Output Voltage	100~310 VAC	100~310 VAC	100~310 VAC
Output power range	<500W	<1000W	<200W HBL series
Detection distance	3M ~ 10M	3M ~ 10M	3M ~ 10M
Active time	15sec~2min.	15sec~2min.	15sec~2min.
Detect angle	360°	360°	360°

RF Tube Series



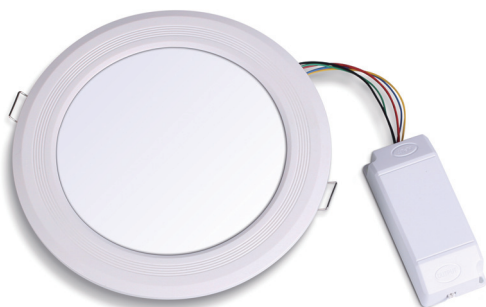
Model Name	WP06G13 Series	WP12G13 Series
Base Type	T8	T8
Dimension	Ψ 28mm x 580 mm	Ψ 28mm x 1198 mm
Input Voltage	100~277 VAC	100~277 VAC
Motion detect distance	5~7 meter	5~7 meter
Power Consumption	Active	10Watt
	Standby	0W or 3W
Active time	30 sec. or 1 min.	30 sec. or 1 min.
Weight / Unit	115g	210g
Illumination Angle	180°	180°
Lumen Active	900 lm	1800 lm

RF Bulb Series



Model Name	WA19E27 Series
Socket Type	E27
Dimension	Ψ 65mm x 130mm
Input Voltage	100~277 VAC
Motion detect distance	5~7 meter
Power Consumption	Active
	Standby
Active time	15 sec.
Weight / Unit	85g
Illumination Angle	180°
Lumen Active	850 lm

RF Downlight



Specification	WD24-10W	WD26-12W	WD28-20W
Color Temperature	3000K/6000K	3000K/6000K	3000K/6000K
Dimension	φ 143mm x 26 mm	φ 187mm x 35 mm	φ 230mm x 44 mm
Input Voltage	100~277 VAC	100~277 VAC	100~277 VAC
Motion detect distance	5~7 meter	5~7 meter	5~7 meter
Power Consumption	Active	10 Watt (Typical)	12 Watt (Typical)
	Standby	3 Watt (Typical)	4 Watt (Typical)
Active time	60 sec	60 sec	60 sec
Weight / Unit	115g	250g	350g
Illumination Angle	180°	180°	180°
Lumen-Active	6000K	1000 lm (Typical)	1250 lm (Typical)
Color Rendering Index	> 80% (Typical)	> 80% (Typical)	> 80% (Typical)



■ High Bay Light

E40 Type



Chain Type



Pipe Type

- Full range power input: 100~310Vac
- Lightweight indoor high bay LED light and lower power consumption
- To replace Mercury/HPS bulb directly, save 80% power.
- Quick lighting on, no warm-up delay, no flicker.
- Safe light source, No UV & IR
- No pollution, recyclable, meet ROHS compliant.

Able to be used in factory, warehouse, supermarket, hotel etc.

Model name	HBL80-E40	HBL100-E40	HBL120-E40	HBL150-E40	HBL-120-CL	HBL-120-PL
Color Temperature	5000K (White)	5000K (White)	5000K (White)	5000K (White)	5000K (White)	5000K (White)
Base Type	E40	E40	E40	E40	Chian link	Pipe link
Dimension	Ø175 x 220mm	Ø 175 x 240mm	Ø175 x 220mm	Ø175 x 220mm	Ø175 x 220mm	Ø175 x 220mm
Input Voltage	100~310Vac	100~310Vac	100~310Vac	100~310Vac	100~310Vac	100~310Vac
Power Consumption	80W (Typical)	100W (Typical)	120W (Typical)	150W (Typical)	120W (Typical)	120W (Typical)
Power Factor	90% (Typical)	90% (Typical)	90% (Typical)	90% (Typical)	90% (Typical)	90% (Typical)
Weight / Unit	2kg	2kg	2kg	2kg	2.2kg	2.2kg
Illumination Angle	120°/80°	120°/80°	120°/80°	120°/80°	120°/80°	120°/80°
Illumination	8000 lm (Typical)	10000 lm (Typical)	12000 lm (Typical)	15000 lm (Typical)	12000 lm (Typical)	12000 lm (Typical)

■ Tube

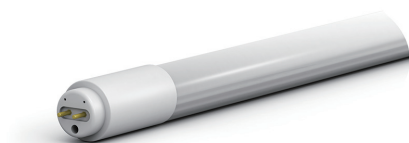
- Input Voltage : 100VAC~240 / 277 VAC
- No starter applied. Replace the traditional fluorescent tube directly.
- Quick lighting on, no warm-up delay, no flicker.
- Aluminum alloy body helps better heat dissipation.
- No UV and IR.
- Low power consumption, save more energy and money.
- No pollution, recyclable, meet ROHS compliant
- Compatible with T8/T10 lighting fixtures.
- Able to be used in office illumination, home illumination, building construction or decoration illumination... etc.

T8 Series



Specification	LI06-1500-IO	LI06-1198-IO	LI06-580/590-IO
Color Temperature	5500~6500K	5500~6500K	5500~6500K
Dimension	Ψ30mm x 1500mm	Ψ30mm x 1198 mm	φ30mm x 580/590 mm
Input Voltage	100~240/277 VAC	100~240/277 VAC	100~240/277 VAC
Power Consumption	25W	20W	9W
Weight / Unit	360g	300g	160g
Illumination Angle	180°	180°	180°
Lumen	2500 lm	2000 lm	900 lm
Color Rendering Index	80% (Typical)	80% (Typical)	80% (Typical)

T5 Series



Specification	LI05-1449	LI05-1149	T5-549
Color Temperature	5500~6500K (Daylight)	5500~6500K (Daylight)	5500~6500K (White)
Dimension	ψ20mm x 1449mm	ψ20mm x 1149mm	ψ20mm x 549 mm
Input Voltage	100~240/277 VAC	100~240/277 VAC	100~240/277 VAC
Power Consumption	25 Watt (Typical)	18 Watt (Typical)	9W (Typical)
Weight / Unit	250g	200g	110g
Illumination Angle	180°	180°	180°
Lumen	2300 lm (Typical)	1600 lm (Typical)	800 lm (Typical)
Color Rendering Index	80% (Typical)	80% (Typical)	80% (Typical)



■ Electronic Ballast Compatible

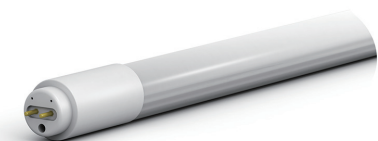
- Compatible with light fixtures with Electronic Ballast.
- Don't remove Electronic Ballast before replace T5/T8 tube .
- Quick lighting on, no warm-up delay, no flicker.
- Lower power consumption, 30% of power saving than traditional T5/T8 tubes.
- Aluminum heat-sink with better heat dissipation .
- Recycle materials, meet ROHS compliant.
- Suitable for office illumination, home illumination, building construction or decoration illumination etc.

T8 Series



Specification	LI06-1500-IO-EB	LI-06-1198-IO-EB	LI-06-580/590-IO-EB
Color Temperature	5500~6500K	5500~6500K	5500~6500K
Dimension	φ30mm x 1500mm	φ30mm x 1198mm	φ30mm x 580/590 mm
Input Voltage	Electronic Ballast	Electronic Ballast	Electronic Ballast
Power Consumption	28W (EB included)	24 Watt (EB included)	13 Watt (EB included)
Weight / Unit	360g	280g	155g
Illumination Angle	180°	180°	180°
Lumen	2500 lm	1600 lm	900 lm
Color Rendering Index	80% (Typical)	80% (Typical)	80% (Typical)

T5 Series



Specification	LI05-1449-EB	LI05-1149-EB	T5-2ft-EB
Color Temperature	5500~6500K (Daylight)	5500~6500K (Daylight)	5500~6500K (White)
Dimension	φ20mm x 1449mm	φ20mm x 1149mm	φ20mm x 549 mm
Input Voltage	Electronic Ballast	Electronic Ballast	Electronic Ballast
Power Consumption	28 Watt (EB included)	24 Watt (EB included)	12W (EB included)
Weight / Unit	250g	200g	110g
Illumination Angle	180°	180°	180°
Lumen	2300 lm (Typical)	2000 lm (Typical)	1000 lm (Typical)
Color Rendering Index	80% (Typical)	80% (Typical)	80% (Typical)

Bulb

- Energy-saving and environment-friendly.
- Replacement bulbs for general lighting.
- Low Power Consumption. Energy saving than traditional light.
- No UV or IR Radiation, No lead, mercury, and chemical material in the bulb.
- Safe and easy to assemble.
- Suitable for home, stage, office, building, supermarket, emporiums, hotel, restaurants, showroom, club, store, art galleries, exhibition hall etc.



BI-08



BI-09



BI-11

Model Name	BI08-E27-100	BI08-E27-120	BI09-E27-150	BI09-E27-180	BI11-E27-10W
Socket Type	E26 / E27 / B22D	E26 / E27 / B22D	E27 / B22D	E27 / B22D	E27
Dimension	ψ61mm x 121 mm	ψ61mm x 121 mm	ψ80,5mm x 146.5 mm	ψ80,5mm x 146.5 mm	ψ60mm x 122 mm
Input Voltage	110 ~ 240Vac	110 ~ 240Vac	110 ~ 240Vac	110 ~ 240Vac	100 ~ 240Vac
Power Consumption	10 Watt	12 Watt	15 Watt	18 Watt	8W / 10W
Weight / Unit	122g	122g	180g	180g	90g
Illumination Angle	240°	240°	180°	180°	330°
Lumen 6000K / 3000K	800 lm / 700 lm	1000 lm / 850 lm	1200 lm / 1100 lm	1400 lm / 1300 lm	640 / 850 lm

T8 gallery & fresh light

- Higher CRI light show the true colors on your art and food.
- Input Voltage: 100~277Vac.
- Remove starter before replace T8 fluorescent tube.
- Quick lighting on, no warm-up delay, no flicker.
- No UV and IR.
- Lower power consumption, save more powers than traditional T8 tube.
- Recycle materials, meet ROHS compliant.
- Compatible with current T8/T10 fixtures.
- Suitable for super market, studio and photo/art galleries.



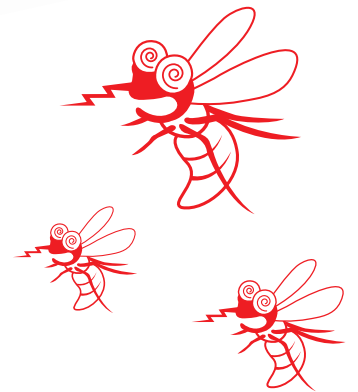
Model Name	LI06-1198-IO	LI06-580-IO	LI06-1198-IO	LI06-580-IO
Color Temperature	5000~5500K	5000~5500K	4000K	4000K
Input Voltage	100~277 VAC	100~277 VAC	100~277 VAC	100~277 VAC
Power Consumption	19Watt (Typical)	9Watt (Typical)	18Watt (Typical)	9Watt (Typical)
Power Factor	90% (Typical)	90% (Typical)	90% (Typical)	90% (Typical)
Lumen	1800 lm (Typical)	800 lm (Typical)	1500 lm (Typical)	750 lm (Typical)
Ra	>90%	>90%	>80%	>80%
Color request	R9>90%	R9>90%	Pink	Pink

Clean-room Series

This product is suitable for yellow room process of Semiconductor / PCB / LCD /LED industry etc. It is compatible CE certification with wide input voltage design so that can be used on most countries in the world.

Isolated ultraviolet and short-wavelength blue ray effectively and restrained 500nm below blue ray show up. Major illumination wavelength is controlled between 500~800nm; typical is on $600 \pm 5\text{nm}$. It is 100% to meet yellow room process criteria.

Using excellent lumen maintenance high brightness LED and TBC patented driver design inside, low light output degradation and safe for human and energy saving and long warranty are the key features we guaranteed.



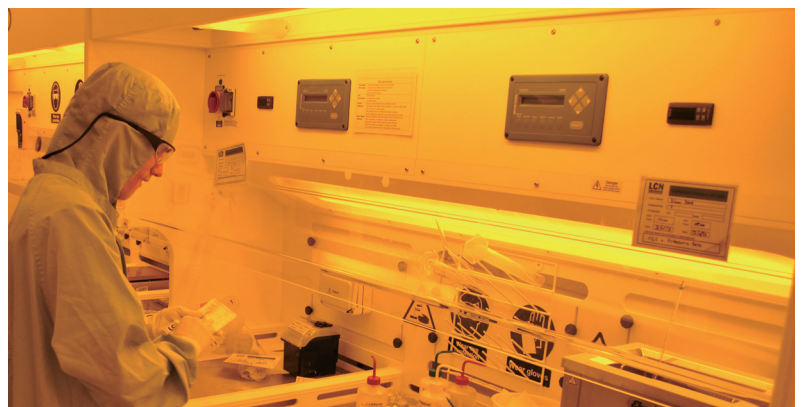
Insect repellent tube product keeps your own place insects, moths, dayflies and mosquitos free.

It provides illumination with unique wavelength that effectively repels mosquitoes by photons, it has unique and outstanding characters like: no smoke, no odors, no poison, no pollution, no radiation, safety and reliability, environment-friendly and does no harm to human and plants.

It is a great product to use while gardening or sitting around outside. It kept 90% of the insects away.

We would recommend this product for gardening or if someone is entertaining outside

It is also perfected for outdoor activities like restaurants, parks and public places which may be disrupted by the buzz of insects.



Model Name	RT06G13-010Y73	RT10G13-020Y73	RT11G13-020Y73	RT12G13-020Y73
Wave length	500nm ~ 800nm	500nm ~ 800nm	500nm ~ 800nm	500nm ~ 800nm
Dimension	φ28mm x 580 mm	φ28mm x 1047.5 mm	φ28mm x 1085 mm	φ28mm x 1198 mm
Power Consumption	100~277 VAC	100~277 VAC	100~277 VAC	100~277 VAC
Power Factor	10 Watt	20 Watt	20 Watt	20 Watt
Illumination Angle	120°	120°	120°	120°
Lumen	600 lm	1000 lm	1000 lm	1000 lm