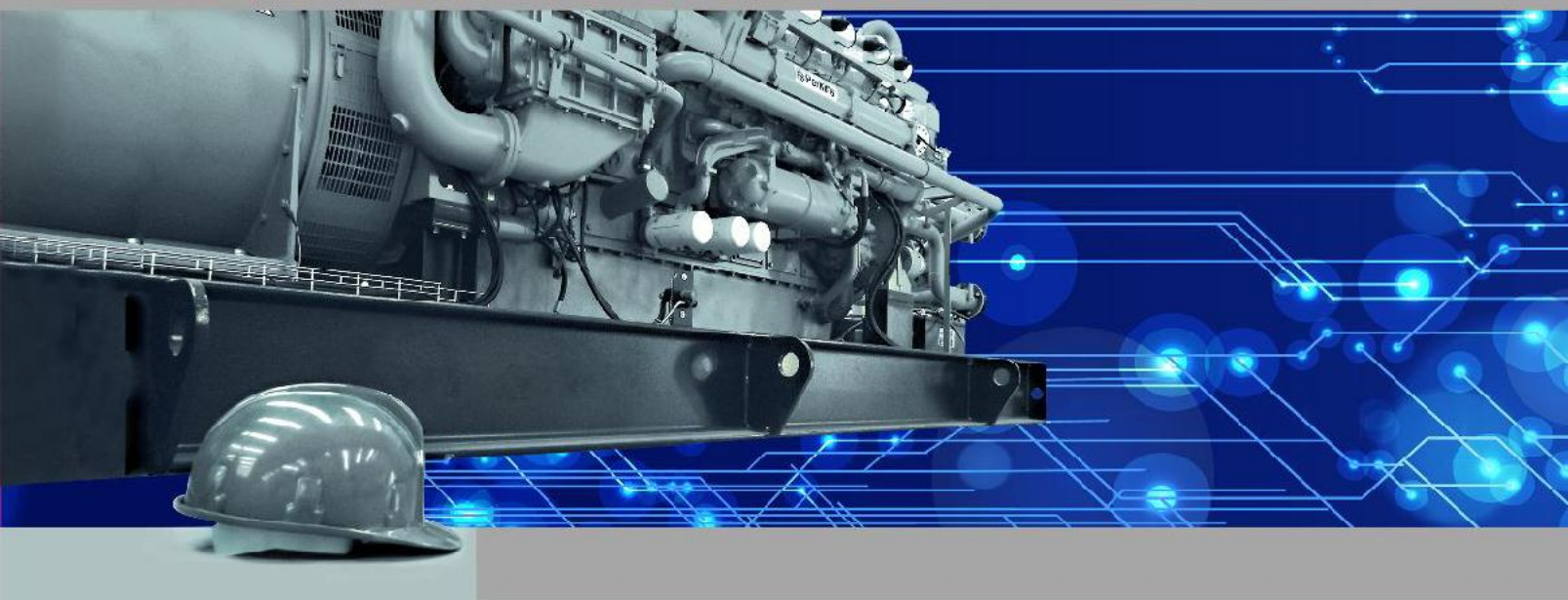




## **KIA DIESEL SPADAN**

we make your univers luminous



**Complete Genset Catalog .....**



**we make your univers luminous**

# Index

Company	2 - 13
<b>Kes energy</b>	
Cummins	14 - 15
MTU	16 - 17
Perkins	18 - 19
Volvo	20 - 21
<b>Cummins Power</b>	
Cummins	22-25
<b>Caterpillar</b>	
Cat	26-29
<b>Elcos</b>	
Cummins	30 -31
Volvo	32 -33
<b>Gas Power</b>	
Perkins	34 -35
MTU	36 -37
Gas Project	38 -39
<b>Kia Diesel</b>	
Cummins	40 -41
Perkins	42 -43
Volvo	44 - 45
<b>Silenser</b>	
Conopy	46 -49
Container	50 -51
<b>Light Tower</b>	
Perkins	52 -53
<b>Generator</b>	
Mareli	54 - 55
<b>Controler</b>	
PLC	56
ATS	57
Cable	58 - 59
Derating	60
Schematic map	61

## ■ شرکت کیا دیزل اسپادان

با چندین سال علم و تجربه در زمینه واردات ، تولید ، عرضه ، فروش و خدمات پس از فروش دستگاه های مولد برق (دیزلی و گازی) در ایران فعالیت دارد و در طول مدت عملکرد خود در بخشهای مختلف نفت ، گاز ، پتروشیمی نیروگاهی صنعت ، معدن ، صنایع غذایی پروژه های ساختمانی ، بیمارستانی و ... توانسته است رضایت خاطر مشتریان خود را در همه زمینه ها فراهم آورده . کلیه دستگاه های ارائه شده توسط این شرکت از معروفترین موتورهای جهان کامینز ، کاترپیلار ، پرکینز ، ولوو ، دویتس و ... و ژنراتورهای معروف جهان : استامفورد انگلستان ، مارلی ایتالیا لوری سومر فرانسه و ... استفاده می گردد.

## ■ KIA DIESELESPADAN CO.

With many years of experience in importing, producing, supplying, selling and after - sale services of electricity generators (diesel and gas - fired) in Iran, during its activities, the company, in different parts of oil, gas, petrochemical, powerhouse industry, mine, food industry and building and hospital projects, has kept its customers satisfied.

In all presented machines, the most famous engines in the world: Cummins, Caterpillar, Perkins, Volvo, Deutz, and the most famous generators : Stamford of England, Marley of Italy Leroy somer of franc, etc. are used.



## Goals

- Provider of high quality and valued products, synchronized with international standards and current technology.  
ISO 9001-2000/ IEC 34/ UTE 5100/ ISO 3046/ ISO 8526
- Offering new services and providing spare parts of products.
- Making interaction and keeping the customers satisfied.

## اهداف

ارائه محصولات با کیفیت مطلوب و همگام با استانداردهای جهانی با  
تکنولوژی روز جهان  
ISO 9001-2000/ IE C 34 /UTE 5100/ISO 3046/ ISO 8526  
ارائه خدمات نوین و تامین لوازم یدکی محصولات  
ایجاد تعامل و مشتری مداری و جلب رضایت مشتری



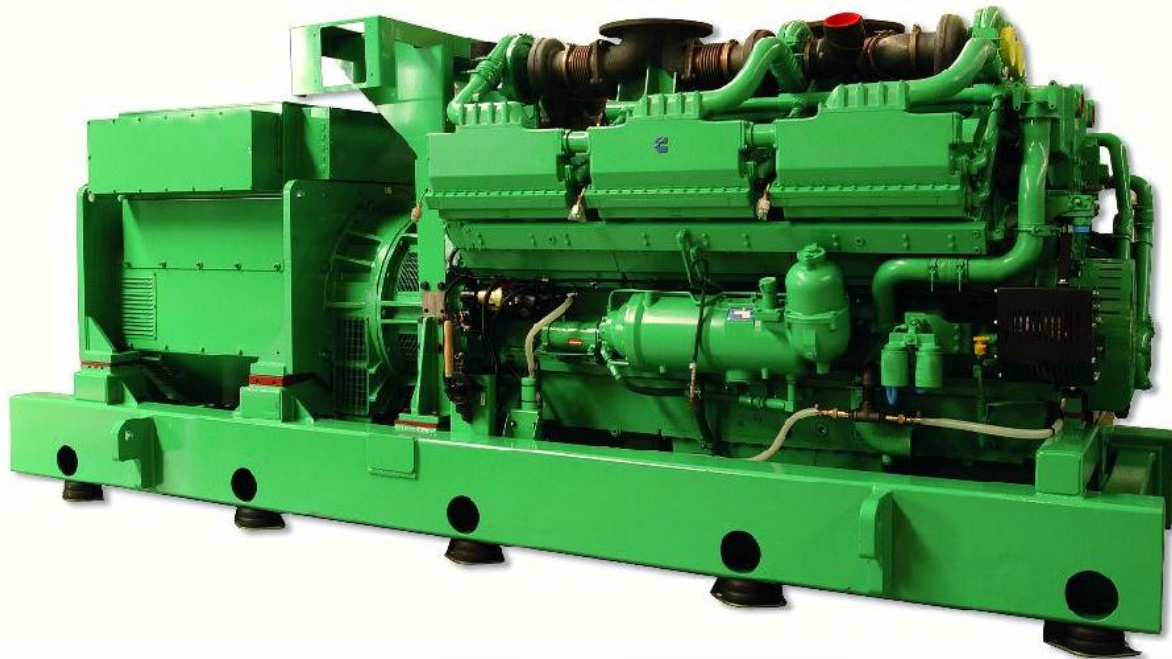
 **ISO 9001**  
C E R T I F I E D



### Activities

- Importer of different diesel generators and engines of gas-fired generators with cover or without cover, as fabric coupled from KVA 3500 - 10
- The coupler of Cummins, Perkins, MTU and Volvo engines with Stamford generators of England and Marley of Italy
- Importer of various generators and electromotors of Marley of Italy in kinds of AC and DC with different powers.
- Producer and importer of high voltage and control panels.
- Producer and importer of paralyng and synchronization systems.





## فعالیت ها

- وارد کننده انواع دستگاه های دیزل ژنراتور و موتور ژنراتورهای گاز سوز با کاور و بدون کاور به صورت کوپله فابریک از ۱۰ - ۳۵۰۰ kVA
- کوپله کننده موتورهای کامبیز، پرکینز، ام تی یو، ولوو با ژنراتورهای استامفورد انگلستان و مارلی ایتالیا
- وارد کننده انواع ژنراتورها و الکتروموتورهای مارلی ساخت کشور ایتالیا در انواع AC و DC با قدرت های مختلف
- تولید کننده و وارد کننده تابلوهای کنترل و قدرت
- تولید کننده و وارد کننده سیستمهای پارالینگ و سنکرون



**After-sale service :**

- The diesel generator machines presented by this company all include 1200 working hours or one year of guarantee and ten years of after-sale service.
- Services of installing and operating the machine.
- Service and maintenance by experienced staff of this company during the guarantee time.
- Operating and testing the machines, and teaching machine's operators by technical experts of this company.



## خدمات پس از فروش

- دستگاه دیزل ژنراتور ارائه شده توسط این شرکت دارای ۱۲۰۰ ساعت کاری و یک سال گارانتی و ۱۰ سال خدمات پس از فروش می باشد.
- انجام خدمات نصب و راه اندازی دستگاه
- انجام خدمات سرویس و نگهداری توسط کادر مجرب فنی این شرکت در طول مدت گارانتی
- استارت و تست دستگاه ها و آموزش اپراتوری دستگاه توسط کارشناسان فنی این شرکت



KES ENERGY Company



ELCOS Company



TecnoGen Company



Marelli Company



Cummins Company

**TecnoGen**

**MANUFACTURER'S AUTHORIZATION**

**TO WHOM IT MAY CONCERN**

**TECNOGEN SPA**, established and reputable manufacturers of DIESEL GENERATING SETS having factories in 29010 Pontenurs (Piacenza, Italy) and Grotaminarda (AV, Italy)

do hereby authorize Company **Kia Diesel Spadan Co.**, Sun Build, The Edge of Panj-e-Ramezan, Isfahan, Iran

to represent the **TECNOGEN** brand on the Iranian territory.

**TECNOGEN** also authorize **Kia Diesel Spadan Co.**, to the sales and after-sales service of their generating sets having **Kia Diesel Spadan Co.**, the necessary technical competence.

Pontenurs, May 2009

**TECNOGEN S.p.A** - via Emilia 242 - 29010 Revelete di Cadeo (PC) ITALY  
Tel +39 0523 512440 - Fax +39 0523 504453 - Email: export@tecnogen.com - Web: www.tecnogen.com

**KES ENERGY**

P-KS-REF-65

TO **KIA DIESEL SPADAN**  
Sun Build, The Edge of Panj-e-Ramezan,  
Masjed seyed str,  
Isfahan-Iran

**DISTRIBUTION AGREEMENT AUTHORIZATION**

**KES-ENERGY**, do hereby authorize company **KIA DIESEL SPADAN** (Isfahan-Iran) to represent the **KES-ENERGY** generating sets brand on Iranian territory.

Issued on: 01 January 2011  
Validity date: 31 December 2014

**KES-ENERGY** also full authorize **KIA DIESEL SPADAN** to the sales and after-sales service of their generating sets having **Kia Diesel Spadan** the necessary technical competence.

Angonese Alessia  
Export Director  
info@kes-energy.it

**KES-ENERGY**  
Maison-Italy

**KES ENERGY** - Via Cimovani 31 - 36056 Montebelluna (TV) Italy - Tel: 0209 0424 429469 - Fax: 0209 0424 11564 - E-mail: kesenergy@kesenergy.it

**MarelliMotori**

Reception tel: (+39) 0444 479711  
Fax Reception: (+39) 0444 479930  
Fax Commercial: (+39) 0444 479988  
Fax Communication: (+39) 0444 479846  
Fax Assistenza Tecnica: (+39) 0444 479757

Capitale Sociale Euro 7.500.000.000,00 vers.  
Sede Legale e Stabilimento:  
Marelli Motori S.p.A.  
Via Salsomarina, 1 - 35071 Arzignano (VI) - ITALIA  
www.marellimotori.com e-mail: sales@marellimotori.com

CP P. Italia N. Reg. Imp. VI 0207800045  
REG. N. 239401

**DISTRIBUTION AGREEMENT**

**Marelli Motori S.p.A.**  
Via Salsomarina, 1  
35071 Arzignano, Vicenza  
ITALY

hereby declares that:

**KIA DIESEL SPADAN**  
Esfahan  
IRAN

is appointed as a distributor of Marelli Motori for the following products:

Synchronous Generators  
Spare Parts for Synchronous Generators

This appointment is applicable to the territory of IRAN

Issued on: 1 January 2009  
Validity date: 31 December 2014

This appointment gives **BARGH AFSHAN SEPAHAN** the right to resell MarelliMotori products in its own right as an independent company and to conduct such business in a proper manner in accordance with the rules, laws and customs of the territory. This appointment does not give **KIA DIESEL SPADAN** the right to represent MarelliMotori to any third parties without the written consent of MarelliMotori, nor does it give rights to third parties for any eventual claims arising from any improper actions of **BARGH AFSHAN SEPAHAN**.

Diego Marchezzo  
Area Manager

1 / 1

<b>Export sales</b>	<b>Italy Sales Offices:</b>	<b>Milano</b>	<b>Firenze</b>
Via Salsomarina 1 35071 Arzignano (VI) Tel: 0444 479988 Fax: 0444 479988	Venezia Via Salsomarina 1 35071 Arzignano (VI) Tel: 0444 479846 Fax: 0444 479888	Via Cassone Carlo 29 20092 Cassone Balsani (MI) Tel: 02 860 34485 Fax: 02 860 34483	Via de' Pancinacci 37/2 50137 Firenze Tel: 055 431008 Fax: 055 432051

**ELCOS** GRUPPI ELETTROGENI

S.S. 234Km 58,250  
26023  
Castelfranco +39 0372 72300  
e-mail: info@elcos.net

Grumello Cremonese (CR)  
P.I. 01084730199  
Fax: +39 0372 7231220  
http://www.elcos.net

Ref. 078-10 AD KIA DIESEL

**KIA DIESEL SPADAN**  
Sun Build  
The Edge of Panj-e-Ramezan Ave.,  
Masjed Seyyed Str.,  
Isfahan - IRAN

Mrs. Mr. Gholi Hamid Reza  
Tag 01

Grumello Cremonese, 20/06/2010

**Letter of commitment.**

Wherewith **ELCOS S.r.l.**, S.S. 234 Km. 58,250, 26023, Grumello Cremonese (CR) - Italy manufacturer of the Gen Sets range from 1 to 3000kVA, hereby introduces **KIA DIESEL SPADAN** Sun Build, The Edge of Panj-e-Ramezan Ave., Masjed Seyyed Str., Isfahan - IRAN as the official Representative in Iran, for the purpose of provision of after sales services to the full satisfaction of the owners of Gen Sets, in Iran. **KIA DIESEL SPADAN** has a valid contract for the distribution of the gen sets and provision of other after sales services and maintenance of the same ones.

We **ELCOS S.r.l.** hereby commit ourselves, for the provision of adequate and satisfactory after sales services to ensure following activities:

- To guarantee the FCI (pre-delivery inspection) for all the above mentioned products, in use in Iran, and parts and components thereof which are the subject of the Representative contract for the products of our company.
- To guarantee the provision of the components and spare parts and other relevant services, at reasonable prices, for at least ten (10) years after the last production year of each model.

In addition, we **ELCOS S.r.l.** hereby commit ourselves that, in case, for any reason whatsoever, the above-mentioned **KIA DIESEL SPADAN** will stop their activities in Iran, immediately, assign, must appoint a new reliable "Representative", to fulfil the newly appointed "Representative" shall fulfil all the obligations and undertake described in the Letter of Commitment, and all the commitments of the previous "Representative" shall be transferred to the new "Representative" under our guarantee.

Present letter will remain in charge until 31/12/2014. After that date we will consider naturally expired present authorization letter.

Yours at your complete disposal for further information.

Best regards,

**ELCOS S.r.l.**  
Andrea ELCOSS  
Export Sales Director

## نمایندگی ها

نمایندگی انحصاری کمپانی **KES ENERGY** ایتالیا در ایران  
 نمایندگی انحصاری کمپانی **ELCOS** ایتالیا در خاورمیانه  
 نمایندگی انحصاری کمپانی **TECNOGEN** ایتالیا در ایران  
 نمایندگی انحصاری ژنراتورهای **MARELI** ایتالیا در ایران  
 نمایندگی فروش کمپانی **CUMMINS POWER** انگلستان در ایران



- Power Products from 11 kVA to 2250 kVA
- Engine: CUMMINS
- Design: 4 cycle
- Fuel System: Direct Injection
- Standard Cooling System: Radiator
- 1500 rpm diesel engine
- Alternator: STAMFORD/MARELLI/LEROYSOMER
- Class H insulation
- 230/400 v, 3 phase, 50Hz, Pf 0.8, IP 23


**KES ENERGY**


Model	Standby		Prime		Engine					Dimension(mm)			Weight Kg
	kVA	kW	kVA	kW	Type	kWm	cyl	Bore	Stroke	L	W	H	
KECSW11	11	8.8	10	8	X1.3G1	8.3	3	95	91	1390	750	1190	380
KECSW22	22	17.6	20	16	X2.5G2	27	3	91	127	1390	750	1190	560
KECSW38	38	30.4	35	28	X3.3G1	36	4	91	127	1650	750	1250	680
KECSW44	44	35.2	40	32	S3.8G4	43.4	4	97	128	1650	750	1300	710
KECSW55	55	44	50	40	S3.8G6	53.4	4	97	128	1650	750	1300	760
KECSW66	66	52.8	60	48	S3.8G7	64.9	4	97	128	1650	750	1300	860
KECSW110	110	88	100	80	6BTA5.9G5	102	6	102	120	2300	1100	1350	1150
KECSW137	137	109.6	100	80	6BTA5.9G3	135	6	102	120	2300	1100	1350	1240
KECSW176	176	140.8	160	128	6BTAA5.9G5	160	6	102	120	2300	1100	1450	1450
KECSW275	275	220	250	220	QSL9G3	257	6	114	145	3200	1200	2000	2100
KECSW330	330	268	300	240	QSL9G5	310	6	114	145	3200	1200	2000	2450
KECSW400	400	320	370	296	NTA855G4	351	6	140	152	3600	1300	2100	3400
KECSW550	550	440	500	400	QSK15G8	500	6	137	169	3600	1300	2250	4050
KECSW700	700	560	630	504	VTA28G5	615	12	140	152	3900	1500	2250	5450
KECSW900	900	720	810	648	QSK23G3	768	6	170	170	4600	1800	2250	6900
KECSW1000	1000	800	910	728	QST30G3	895	12	140	165	5400	1800	2290	7300
KECSW1120	1120	896	1020	816	QST30G4	970	12	140	165	5400	1800	2290	7850
KECSW1400	1400	1120	1280	1024	KTA50G3	1227	16	159	159	5700	2200	2300	10850
KECSW1640	1640	1312	1400	1120	KTA50G8	1429	16	159	159	5700	2200	2300	11600
KECSW2250	2250	1800	2000	1120	QSK60G4	1915	16	159	190	6500	2200	2400	15800





Model	Standby		Prime		Engine					Dimension(mm)			Weight
	Genset	kVA	kW	kVA	kW	Type	kWm	cyl	Bore	Stroke	L	W	H
KEMTSW300	300	240	275	220	6R1600G10F	246	6	122	150	3200	1200	2000	3000
KEMTSW330	330	264	300	240	6R1600G20F	274	6	122	150	3200	1200	2000	3200
KEMTSW400	400	320	370	296	8V1600G10F	325	8	122	150	3200	1200	2050	3450
KEMTSW440	440	352	400	320	8V1600G20F	358	8	122	150	3200	1200	2050	3650
KEMTSW500	500	400	455	364	10V1600G10F	407	10	122	150	3600	1300	2250	4000
KEMTSW550	550	440	500	400	10V1600G20F	448	10	122	150	3600	1300	2250	4000
KEMTSW650	650	520	590	472	12V1600G10F	524	12	122	150	3900	1500	2250	4500
KEMTSW715	715	572	648	518.4	12V1600G20F	576	12	122	150	3900	1500	2250	4700
KEMTSW750	750	600	680	544	12V2000G25	580	12	122	150	3900	1500	2250	5000
KEMTSW900	900	720	810	648	12V2000G65	690	12	130	150	3200	1200	2000	5980
KEMTSW1050	1050	840	913	730.4	16V2000G25	810	16	130	150	4600	1800	2200	6500
KEMTSW1160	1160	928	1000	800	16V2000G65	890	16	130	150	5400	1800	2300	6950
KEMTSW1300	1300	1040	1150	920	18V2000G65	1000	18	130	150	5400	1800	2300	7800
KEMTSW1800	1800	1440	1650	1320	12V4000G23	1420	12	170	210	5600	2200	2500	11800
KEMTSW2000	2000	1600	1850	1480	12V4000G63	1575	12	130	150	5600	2200	2500	12400
KEMTSW2300	2300	1840	2100	1680	16V4000G23	1798	16	170	210	5600	2200	2500	17900
KEMTSW2530	2530	2024	2300	1840	16V4000G63	1965	16	170	210	6500	2350	3100	15600
KEMTSW2800	2800	2240	2550	2040	20V4000G23	2200	20	170	210	6500	2200	2500	16800
KEMTSW3000	3000	2400	2800	2240	20V4000G63	2420	20	170	210	6500	2200	2750	17900
KEMTSW3360	3360	2688	3050	2400	20V4000G63L	2590	20	170	210	6500	2200	2750	19000







**KES ENERGY**



- Power Products from 300 kVA to 3360 kVA
- Engine: MTU
- Design: 4 cycle
- Fuel System: Direct Injection
- Standard Cooling System: Radiator
- 1500 rpm diesel engine
- Alternator: STAMFORD/MARELLI/LEROYSOMER
- Class H insulation
- 230/400 v, 3 phase, 50Hz, Pf 0.8, IP 23



- Powler Prooducts from 10 kVA to 2500 kVA
- Engine:Perkins
- Design:4cycle
- FuelSystem:Direct Injection
- Standard Cooling System: Radiator
- 1500 rpm disel engine
- Alternator:STAMFORD / MARELLI / Leroy Somer
- Class H insulation
- 230/400 v, 3 phase , 50Hz , Pf 0.8 ,IP 23



**Perkins**

Model	Standby		Prime		Engine					Dimension(mm)			Weight
	kVA	kW	kVA	kW	Type	kWm	cyl	Bore	Stroke	L	W	H	Kg
KEPSW1000	1000	800	910	728	4008TAG1A	882	8	160	190	5400	1800	2450	8100
KEPSW1100	1125	900	1020	816	4008TAG2A	962	8	160	190	5400	1800	2450	8500
KEPSW1385	1385	1108	1250	1000	401246TWG2A	1224	12	160	190	5600	2200	2500	10800
KEPSW1656	1654	1325	1500	1200	401246TAG2A	1459	12	160	190	5700	2200	2600	11500
KEPSW1880	1880	1504	1710	1368	401246TAG3A	1643	12	160	190	5700	2200	2600	11900
KEPSW2000	2000	1600	1825	1460	61TRG1	1684	16	160	190	6500	2500	3322	15500
KEPSW2250	2250	1800	2000	1600	61TRG2	1894	16	160	190	6500	2700	3400	14000
KEPSW2250	2500	2000	2250	1800	61TRG3	2083	16	160	190	6500	2200	2500	147000





**KES ENERGY**

**Perkins**

Model	Standby		Prime		Engine					Dimension <sub>(mm)</sub>			Weight
	kVA	kW	kVA	kW	Type	kWm	cyl	Bore	Stroke	L	W	H	Kg
KEPSW10	10	8	9	7.2	403 D 11G	8.6	3	77	81	1390	750	1190	320
KEPSW15	15	12	13	10.4	403 D 15G	13.5	3	84	90	1390	750	1190	390
KEPSW22	22	17.6	20	16	404 D 22G	20.6	4	84	100	1390	750	1190	450
KEPSW33	33	26.4	30	24	1103A 33G	31	3	105	127	1650	750	1250	700
KEPSW50	50	40	45	36	1103A 33TG1	46.5	3	105	127	1650	750	1250	750
KEPSW66	66	52.8	60	48	1103A 33TG2	60.5	3	105	127	1650	750	1300	800
KEPSW88	88	70	80	64	1104A 44TG2	79.1	4	105	127	1850	900	1350	920
KEPSW111	111	88.8	101	80.8	1104C 44TAG2	103	4	105	127	2300	1100	1350	920
KEPSW150	150	120	136	108.8	1006TAG	141	6	100	127	2300	1100	1480	1200
KEPSW165	165	132	150	120	1006TAG2	150.5	6	100	127	2300	1100	1600	1400
KEPSW200	200	160	185	148	1106C E66TAG4	180.4	6	105	127	2600	1100	1800	1500
KEPSW230	230	184	209	167	1306C E87TAG3	199	6	116	135	2500	1000	1650	1650
KEPSW250	250	200	227	182	1306C E87TAG4	217	6	116	135	2500	1000	1650	1650
KEPSW275	275	220	250	200	1306C E87TAG6	224	6	116	135	2600	1100	1800	1650
KEPSW350	350	280	320	265	2206AE13TAG2	349	6	130	157	3400	1150	1980	3400
KEPSW400	400	320	350	280	2206AE13TAG2	368	6	130	157	3200	1200	1980	3200
KEPSW450	450	360	400	320	2206AE13TAG3	413	6	130	157	3200	1200	1980	3350
KEPSW550	550	440	500	400	2506AE15TAG2	495	6	137	171	3600	1300	2250	3750
KEPSW660	660	528	600	480	2806AE18TAG1A	628	6	145	183	3900	1500	2250	4400
KEPSW700	700	650	636	636	2806AE18TAG1A	574	6	145	183	3900	1600	2200	4400
KEPSW800	825	660	750	600	4006 23TAG2A	721	6	160	190	4600	1800	2250	5900
KEPSW900	900	720	800	640	4006 23TAG3A	786	6	160	190	4600	1800	2250	6100





## VOLVO PENTA

Model	Standby		Prime		Engine					Dimension(mm)			Weight
	kVA	kW	kVA	kW	Type	kWm	cyl	Bore	Stroke	L	W	H	Kg
KEVSW 94	94	75.2	85	68	TAD 530 GE	83	4	108	130	2300	1100	1500	950
KEVSW110	110	88	105	84	TAD 531 GE	98	4	108	130	2300	1100	1500	1100
KEVSW142	142	114	130	104	TAD 532 GE	125	4	108	130	2300	1100	1600	1220
KEVSW165	165	132	150	120	TAD 731 GE	148	6	108	130	2600	1100	1700	1590
KEVSW200	200	160	180	144	TAD 732 GE	179	6	108	130	2600	1100	1800	1680
KEVSW220	220	176	200	160	TAD 733 GE	197	6	108	130	2600	1100	2000	1820
KEVSW275	275	220	250	200	TAD 734 GE	241	6	108	130	2600	1100	2000	1980
KEVSW300	300	240	273	208	TAD 940 GE	267	6	120	138	3000	1200	2000	2100
KEVSW346	346	276	320	256	TAD 1341 GE	298	6	131	158	3000	1200	2000	2600
KEVSW355	355	284	323	258	TAD 941 GE	310	6	120	138	3000	1200	2000	2650
KEVSW385	385	308	350	280	TAD 1342 GE	333	6	131	158	3200	1200	2000	2960
KEVSW415	415	332	375	300	TAD 1343 GE	356	6	131	158	3200	1200	2000	3050
KEVSW450	450	360	410	328	TAD 1344 GE	389	6	131	158	3400	1200	2000	3250
KEVSW500	500	400	455	364	TAD 1345 GE	431	6	131	158	3400	1200	2000	3400
KEVSW550	550	440	500	400	TAD 1641 GE	473	6	144	165	3600	1250	2250	3800
KEVSW650	650	520	590	472	TAD 1642 GE	536	6	144	165	3600	1300	2250	4300
KEVSW700	700	560	636	509	TWD 1643 GE	596	6	144	165	3900	1500	2250	4700





**KES ENERGY**



- Power Products from 94 kVA to 700 kVA
- Engine: VOLVO PENTA
- Design: 4cycle
- Fuel System: Direct Injection
- Standard Cooling System: Radiator
- 1500 rpm diesel engine
- Alternator: STAMFORD / MARELLI / LEROY SOMER
- Class H insulation
- 230/400 v, 3 phase, 50Hz, Pf 0.8, IP 23



- Powter Poroducts from 8 kVA to 3325 kVA
- Engine:CUMMINS
- Design:4cycle
- FuelSystem:Direct Injection
- Standard Cooling System: Radiator
- 1500 rpm disel engine
- Alternator:STAMFORD
- Class H insulation
- 230/400 v, 3 phase , 50Hz , Pf 0.8 ,IP 23


**Power  
Generation**


Model	Standby		Prime		Engine					Dimension <sub>(mm)</sub>			Weight
	kVA	kW	kVA	kW	Type	kWm	cyl	Bore	Stroke	L	W	H	Kg
C8 D5	8	6.6	7.5	6	X1.3G2	11.8	2	95	91	1700	787	928	508
C11 D5	11	8.8	10	8	X1.3G2	11.8	2	95	91	1700	787	928	508
C17 D5	16.5	13	15	12	X2.5G2	26	3	91.7	127	1667	930	1247	582
C22 D5	22	17	20	16	X2.5G2	26	3	91.7	127	1667	930	1247	582
C28 D5	27.5	22	25	20	X2.5G2	26	3	91.7	127	1667	930	1247	605
C33 D5	33	26.4	30	24	X3.3G1	35	3	91.4	127	1753	930	1250	875
C33 D5e	33	26.4	30	24	4BT3.3G3	53	4	95	115	1853	930	1256	645
C38 D5	38	30.4	35	28	X3.3G1	35	3	91.4	127	1753	930	1250	910
C44 D5	44	35	40	32	S3.8G4	43	4	97	128	2115	1044	1516	945
C44 D5e	44	35.2	40	31.68	4BT3.3G3	53	4	95	115	1753	930	1256	776
C55 D5	55	44	50	40	S3.8G6	53.8	4	97	128	2115	1044	1215	955
C55 D5e	55	44	50	40	4BT3.3G3	53	4	95	115	1753	930	1256	776
C66 D5	66	53	60	48	S3.8G7	65	4	97	128	2115	1044	1221	1005
C90 D5	90	72	82	65	6BTA5.9G5	98	6	102	120	2268	1094	1576	1244
C110 D5	110	88	100	80	6BTA5.9G5	98	6	102	120	2268	1094	1576	1263
C150 D5	150	120	136	109	6BTA5.9G2	145	6	102	120	2404	1100	1472	1206
C175 D5e	175	140	158	126	QSB7G5	213	6	107	124	2656	1100	1658	2128
C200 D5e	200	160	182	146	QSB7G5	213	6	107	124	2656	1100	1658	2226
C220 D5e	220	176	200	160	QSB7G5	213	6	107	124	2656	1100	1658	2226
C250 D5	250	200	227	182	6CTAA8.3G2	193	6	114	135	2686	1300	1547	2000
C275 D5	275	220	250	200	QSL9G5	310	6	114	145	3135	1100	1928	2347
C300 D5	300	240	275	220	QSL9G5	310	6	114	145	5668	2313	1928	20616
C330 D5	330	264	300	240	QSL9G5	310	6	114	145	7178	2251	1928	25390

**STAMFORD**  
*power generation*



Model	Standby		Prime		Engine					Dimension (mm)			Weight
	kVA	kW	kVA	kW	Type	kWm	cyl	Bore	Stroke	L	W	H	Kg
C350 D5	350	280	320	256	NT855G6	310	6	140	152	3549	1100	2078	3386
C400 D5	400	320	360	288	NTA855G4	351	6	140	152	3549	1100	2078	3563
C440 D5	440	352	400	320	NTA855G7	391	6	140	152	3549	1100	2078	3683
C500 D5e	500	400	450	364	QSX15G8	500	6	137	169	3427	1500	2065	4121
C550 D5e	550	440	500	400	QSX15G8	500	6	137	169	3427	1500	2065	4271
C650 D5A*	650	520	590	472	KTA19G8	575	6	159	159	3419	1285	2065	4350
C700 D5	706	565	640	512	VTA28G5	612	12	140	152	4047	1608	2037	5665
C825 D5	825	660	750	600	QSK23G3	768	6	170	170	4266	1879	2052	6528
C825 D5A*	825	660	750	600	VTA28G6	722	12	140	152	4047	1608	2187	6040
C900 D5	900	720	820	656	QSK23G3	768	6	170	170	4266	1879	2052	6680
C1000 D5	1041	833	939	751	QST30G3	898	12	140	165	4297	1685	2079	6141
C1100 D5	1110	888	1000	800	QST30G4	970	12	140	165	4571	1702	2332	7374
C1100 D5B	1132	905	1029	823	KTA38G5	970	12	159	159	4470	1785	2229	8350
C1250 D5A*	1250	1000	1125	900	KTA38G9	1089	12	159	159	4412	2083	2228	9041
C1400 D5	1400	1120	1250	1000	KTA50G3	1227	16	159	159	5105	2000	2238	10075
C1675 D5	1675	1340	1400	1120	KTA50G8	1429	16	159	159	5690	2033	2333	10626
C1675 D5A*	1675	1340	1500	1200	KTA50GS8	1429	16	159	159	5690	2033	2333	10626
C2000 D5	2063	1650	1875	1500	QSK60G3	1790	16	159	190	6175	2286	2537	15152
C2250 D5	2250	1800	2000	1600	QSK60G4	1915	16	159	190	6175	2286	2286	15510
C2500 D5A*	2500	2000	2250	1800	QSK60G8	2145	16	159	190	6175	2494	2286	17217
C2750 D5	2750	2200	2500	2000	QSK78G9	2539	18	170	190	5668	2313	2300	20616
C3000 D5	3000	2400	2750	2200	QSK78G9	2539	18	170	190	5668	2313	2300	20616
C3300 D5	3325	2660	3000	2400	QSK78G6	2790	18	170	190	7178	2251	2535	25157

**STAMFORD**  
power generation





- Power Products from 8 kVA to 3325 kVA
- Engine: CUMMINS
- Design: 4cycle
- Fuel System: Direct Injection
- Standard Cooling System: Radiator
- 1500 rpm diesel engine
- Alternator: STAMFORD
- Class H insulation
- 230/400 v, 3 phase, 50Hz, Pf 0.8, IP 23



- Powter Poroducts from 300 kVA to 1250 kVA
- Engine: CATERPILLAR
- Design: 4 cycle
- Fuel System: Direct Injection
- Standard Cooling System: Radiator
- 1500 rpm diesel engine
- Alternator:
- Class H insulation
- 230/400 v, 3 phase, 50Hz, Pf 0.8, IP 23



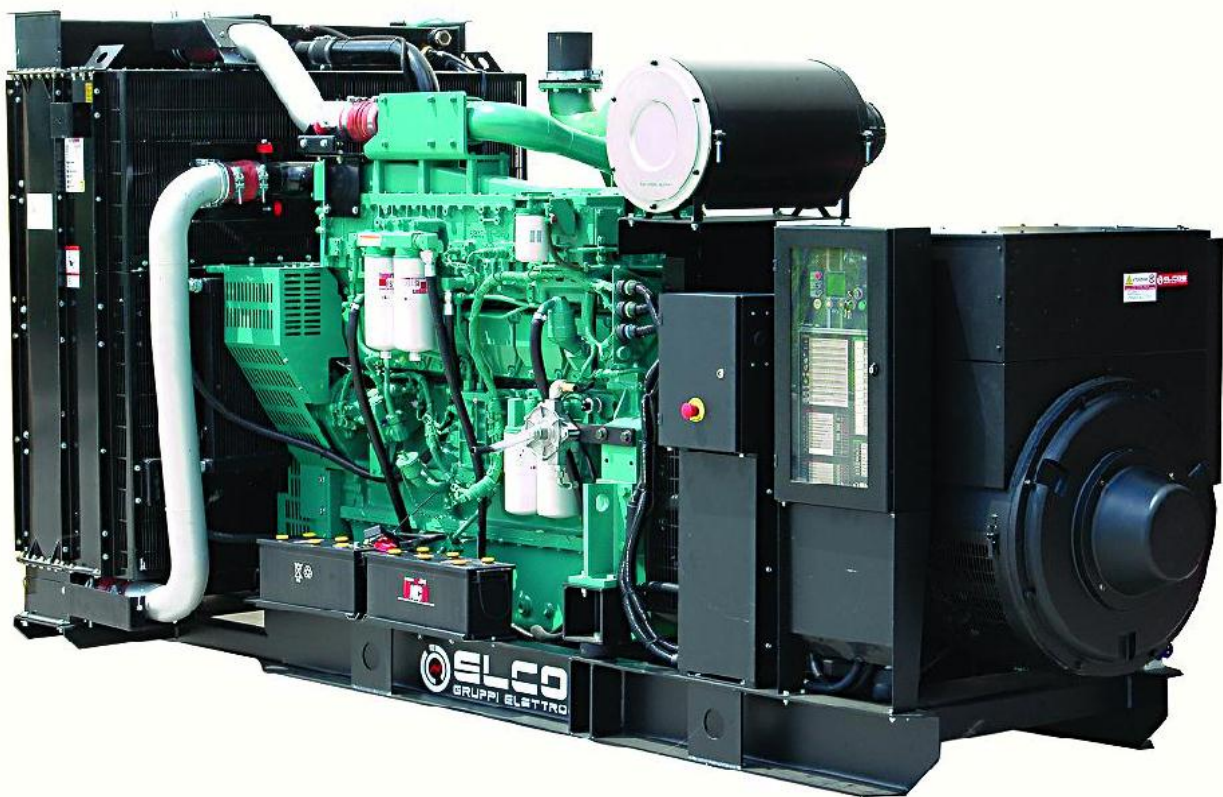
Model	Standby		Prime		Engine				Dimension <sub>(mm)</sub>			Weight
	kVA	kW	kVA	kW	Type	cyl	Bore	Stroke	L	W	H	Kg
Genset 3406C	300	240	275	220	3406C TA	6L	137.20	167.10	4262	1110	2150	3269
3406C	350	280	320	256	3406C TA	6L	137.20	167.10	4262	1110	2150	3464
3406C	400	320	366	288	3406C TA	6L	137.20	167.10	4262	1110	2150	3460
C13	400	320	360	288	C13 ATAAC	6L	130	157	2800	1130	2156	3454
C13	450	360	405	320	C13 ATAAC	6L	130	157	3800	1130	2156	-----
C15	450	360	405	324	C15 ATAAC	6L	137.20	171.40	3830	1130	2215	-----
C15	500	400	450	360	C15 ATAAC	6L	137.20	171.40	3830	1130	2215	-----
C15	550	440	500	400	C15 ATAAC	6L	137.20	171.40	3830	1130	2215	-----
C18	605	484	544	433	C18 ATAAC	6L	145	183	-----	-----	-----	-----
C18	660	528	600	480	C18 ATAAC	6L	145	183	-----	-----	-----	-----
C18	700	560	635	508	C18 ATAAC	6L	145	183	-----	-----	-----	-----
3412C	750	600	670	540	3412C TA	12V	137.20	152.40	4485	1798	1986	6214
3412C	800	640	725	580	3412C TA	12V	137.20	152.40	4485	1798	1986	6256
3412C	900	720	820	656	3412C TA	12V	137.20	152.40	4485	1741	1986	5748
C32	1100	880	1000	800	C32 ATAAC	12V	145	162	4234	2010	2147	-----
3512	1250	1000	1125	900	3512 TA	12V	170	190	5137	1974	2367	12198



Model	Standby		Prime		Engine				Dimension <sub>(mm)</sub>			Weight
	Genset	kVA	kW	kVA	kW	Type	Cyl	Bore	Stroke	L	W	H
C32	1250	1000	1125	900	3512TA	12V	170	190	5137	1974	2367	12198
3512	1400	1120	1230	1000	3512TA	12V	170	190	5237	1974	2367	12398
3512B	1500	1200	1350	1080	3512B TA	12V	170	190	5237	1974	2342	12594
3512B	1600	1280	1440	1152	3512B TA	12V	170	190	5137	1974	2342	12896
3512B-HD	1750	1400	1515	1260	3512B-HDTA	12V	170	190	5468	2093	2367	12642
3512B-HD	1875	1500	1681	1350	3512B-HDTA	12V	170	215	-----	-----	-----	-----
3516 MC	2000	1600	1825	1460	3516 TA	16V	170	190	-----	-----	-----	-----
3516B MC	2250	1800	2000	1600	3516B TA	16V	170	190	-----	-----	-----	-----
3516B MC	2500	2000	2250	1800	3516B-HD	16V	170	215	-----	-----	-----	-----
3606	2687	2150	2418	1934	3606	6V	220	300	10261	2530	3977	34070
3516C	2750	2200	2475	1980	3516C-HD	16V	170	215	7342	2369	3096	-----
C175-16	3000	2400	2700	2160	C173 SCAC	16V	173	220	-----	-----	-----	-----
C175-16	3100	2480	2790	2230	C173 SCAC	16V	173	220	6631	2089	2201	-----
3608	3575	2860	3220	2580	3608	8V	280	300	10261	2530	3977	41390
C175-20	4000	3200	3600	2280	C175-20SCAC	20V	175	220	6719	2377	2556	-----
3612	5375	4300	4840	3270	3612	12V	220	300	10261	2530	3977	51230
3616	7150	5720	6435	5148	3616	16V	220	300	10261	2530	3977	64470



- Power Products from 1400 kVA to 7150 kVA
- Engine: CATERPILLAR
- Design: 4 cycle
- Fuel System: Direct Injection
- Standard Cooling System: Radiator
- 1500 rpm diesel engine
- Alternator:
- Class H insulation
- 230/400 v, 3 phase, 50Hz, Pf 0.8, IP 23



- Power Products from 11 kVA to 2237 kVA
- Engine: CUMMINS
- Design: 4 cycle
- Fuel System: Direct Injection
- Standard Cooling System: Radiator
- 1500 rpm diesel engine
- Alternator: STAMFORD/MARELLI
- Class H insulation
- 230/400 v, 3 phase, 50Hz, Pf 0.8, IP 23



Model	Standby		Prime		Engine					Dimension <sub>(mm)</sub>			Weight
	Genset	kVA	kW	kVA	kW	Type	kWm	cyl	Bore	Stroke	L	W	H
GE.CU.360/325	11	808	10	8	X1.3 G1	10.6	2	95	91	140	80	118	360
GE.CU.030/027	27.5	22	25	20	X2.5 G2	23.4	3	91	127	170	80	127	550
GE.CU.040/035	38	30	35	28	X3.3 G1	35	3	91	127	170	80	127	650
GE.CU.044/040	44	35	40	32	S3.8G4	43	4	97	128	170	80	127	700
GE.CU.055/050	55	44	50	40	S3.8G6	48.7	4	97	128	190	90	150	910
GE.CU.069/060	69	55	63	50	S3.8G7	64.9	4	97	128	190	90	150	810
GE.CU.110/105	110	88	100	80	6BTA5.9G5	102	6	102	120	240	110	150	1200
GE.CU.140/125	138	110	125	100	6BTAA5.9G3	135	6	102	120	240	110	150	1280
GE.CU.176/160	176	140	160	128	6BTAA5.9G5	160	6	102	120	260	110	150	1360
GE.CU.205/185	200	160	182	145	6CTA8.3G2	180	6	114	135	260	110	150	1600
GE.CU.225/205	222	177	200	160	6CTAA8.3G3	230	6	114	135	260	110	150	1650
GE.CU3A.275/250	275	220	250	200	QSL9G3	257	6	114	145	260	110	150	1760
GE.CU3A.300/275	300	240	275	220	QSL9G4	279	6	114	145	275	110	188	1900
GE.CU.346/301	346	277	300	240	QSL9G5	310	6	114	145	275	110	188	2200
GE.CU.400/360	400	320	360	288	NTA855G4	351	6	140	152	300	110	195	2850
GE.CU.550/500	550	440	500	400	QSX15G8	500	6	137	169	320	140	210	3400
GE.CU.700/640	704	563	640	512	VTA28G5	615	12	140	152	400	170	210	5500
GE.CU.890/800	884	707	805	644	QSK23G3	768	6	170	170	400	165	219	6160
GE.CU.1030/940	1029	823	935	748	QST30G3	898	12	140	165	450	200	215	7100
GE.CU.1100/1000	1100	880	1000	800	QST30G4	970	12	140	165	460	200	240	7540
GE.CU.1390/1260	1386	1109	1260	1008	KTA50G3	1227	16	159	159	520	170	240	9350
GE.CU.1540/1400	1540	1232	1400	1120	KTA50G8	1429	16	159	190	560	200	240	10200
GE.CU.2080/1890	2079	1663	1890	1512	QSK60G3	1710	16	159	190	600	250	330	14000
GE.CU.2240/2040	2237	1789	2034	1627	QSK60G4	1915	16	159	190	600	250	340	15000



## VOLVO PENTA

Model	Standby		Prime		Engine					Dimension (mm)			Weight
	kVA	kW	kVA	kW	Type	kWm	cyl	Bore	Stroke	L	W	H	Kg
GE.Vo.94/85	95	76	85	68	TAD 530 GE	83	4	108	130	1900	90	150	1030
GE.Vo.115/105	115	92	105	84	TAD 531 GE	98	4	108	130	2400	110	150	1100
GE.Vo.150/135	150	120	135	108	TAD 532 GE	127	4	108	130	2400	110	150	1380
GE.Vo.165/150	165	132	150	120	TAD 731 GE	148	6	108	130	2600	110	150	1380
GE.Vo.205/185	205	164	185	148	TAD 732 GE	178	6	108	130	2600	110	150	1590
GE.Vo.225/205	225	180	205	164	TAD 733 GE	197	6	108	130	2600	110	150	1600
GE.Vo.275/250	275	220	250	200	TAD 734 GE	241	6	108	138	2600	110	150	2020
GE.Vo.305/275	305	244	275	220	TAD 940 GE	265	6	120	138	2750	115	190	1920
GE.Vo.360/325	360	286	352	260	TAD 941 GE	310	6	120	138	2750	110	190	2840
GE.Vo.375/350	375	300	350	280	TAD 1342 GE	333	6	131	158	3000	115	193	2880
GE.Vo.410/375	410	328	375	300	TAD 1343 GE	356	6	131	158	3000	115	193	2950
GE.Vo.450/410	450	360	410	328	TAD 1344 GE	389	6	131	158	3000	115	193	2980
GE.Vo.500/450	500	400	450	360	TAD 1345 GE	431	6	131	158	3000	115	193	3050
GE.Vo.510/460	510	408	410	368	TAD 1640 GE	432	6	144	165	3200	115	215	3200
GE.Vo.550/500	550	440	500	400	TAD 1641 GE	473	6	144	165	3200	115	215	3400
GE.Vo.630/570	630	504	570	456	TAD 1642 GE	536	6	144	165	3200	115	215	3740
GE.Vo.700/630	700	568	630	504	TWD1642GE	596	6	144	165	3400	135	218	4020

**STAMFORD**  
power generation

 **MarelliGenerators**





- Powter Poroducts from 95 kVA to 700 kVA
- Engine:VOLVO PENTA
- Design:4cycle
- FuelSystem:Direct Injection
- Standard Cooling System: Radiator
- 1500 rpm disel engine
- Alternator:STAMFORD/MARELLI
- Class H insulation
- 230/400 v, 3 phase , 50Hz , Pf 0.8 ,IP 23



**KES ENERGY**

**GAS POWER**



**Perkins®**

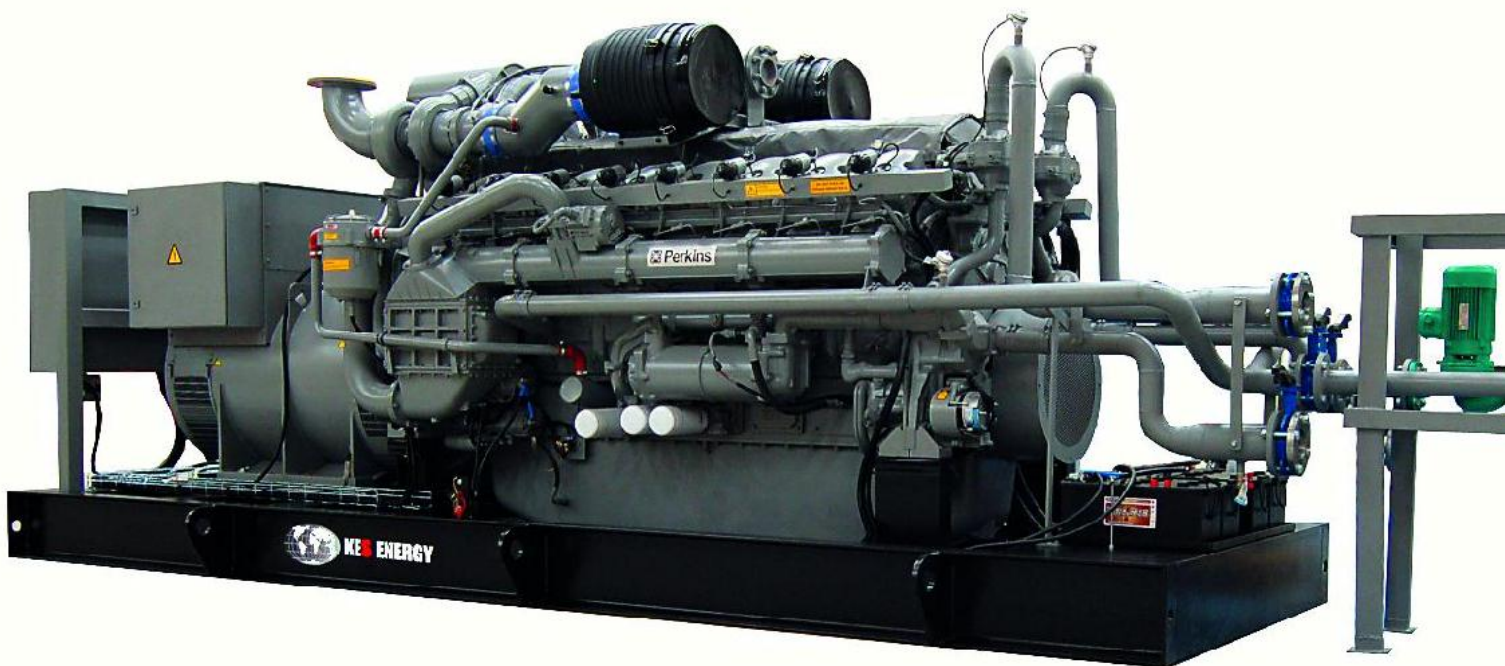
Model	Baseload		Engine					FUEL (kj/kws)	Typical Power Factor
	kVA	kWe	kWm	Cyl	Displacement	Bore	Stroke		
4006-23TRS1 †	384	307	322	6 L	22.92	160	190	2.58	0.8
4006-23TRS2 †	469	375	393	6 L	22.92	160	190	2.52	0.8
4008-30TRS1 †	531	425	447	8 L	30.56	160	190	2.54	0.8
4008-30TRS2 †	625	500	526	8 L	30.56	160	190	2.5	0.8
4016-61TRS1 †	1094	875	912	16V	61.12	160	190	2.51	0.8
4016-61TRS2 †	1250	1000	1042	16V	61.12	160	190	2.48	0.8

\*Available on application †Gross power



**KES ENERGY**

**GAS POWER**



- Power Products from 307 kVA to 1000 kVA (Continuous power)
- Engine: Perkins ( GAS ENGINE SYSTEMS )
- Design: 4cycle
- Fuel System: Direct Injection
- Standard Cooling System:
- 1500 rpm diesel engine
- Alternator: STAMFORD
- Class H insulation
- 230/400 v, 3 phase , 50Hz , Pf 0.8 , IP 23

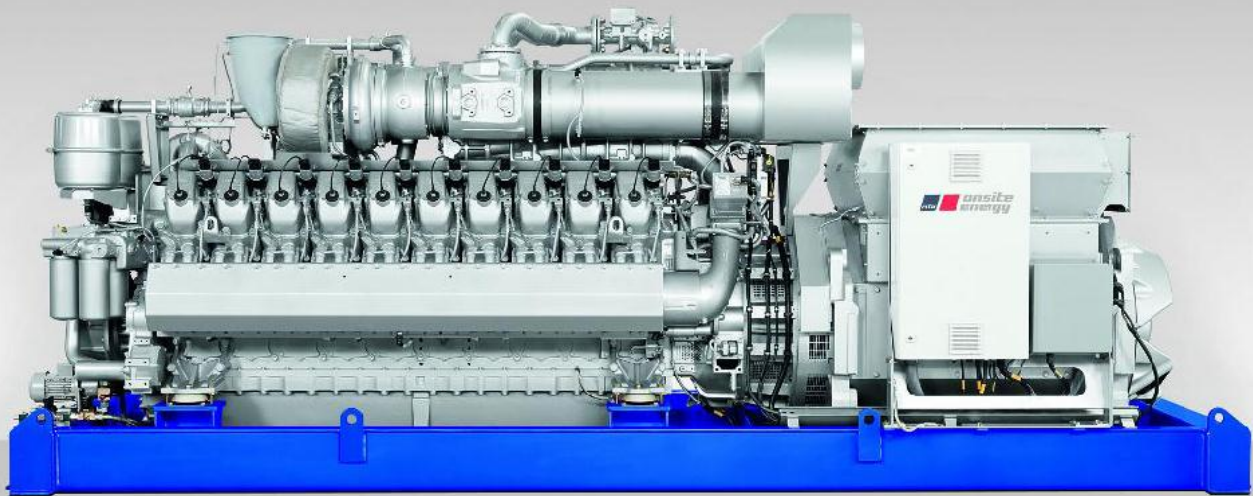
# GAS POWER



GAS ENGINE SYSTEMS  
Continuous power - 50 Hz

- Power Products from 772 kVA to 2145 kVA (Continuous power )
- Engine: MTU ( GAS ENGINE SYSTEMS )
- Design: 4 cycle
- Fuel System: Direct Injection
- Standard Cooling System:
- 1500 rpm diesel engine
- Alternator: STAMFORD
- Class H insulation
- 230/400 v, 3 phase , 50Hz , Pf 0.8 , IP 23

# GAS POWER



## GAS ENGINE SYSTEMS

Continuous power - 50 Hz

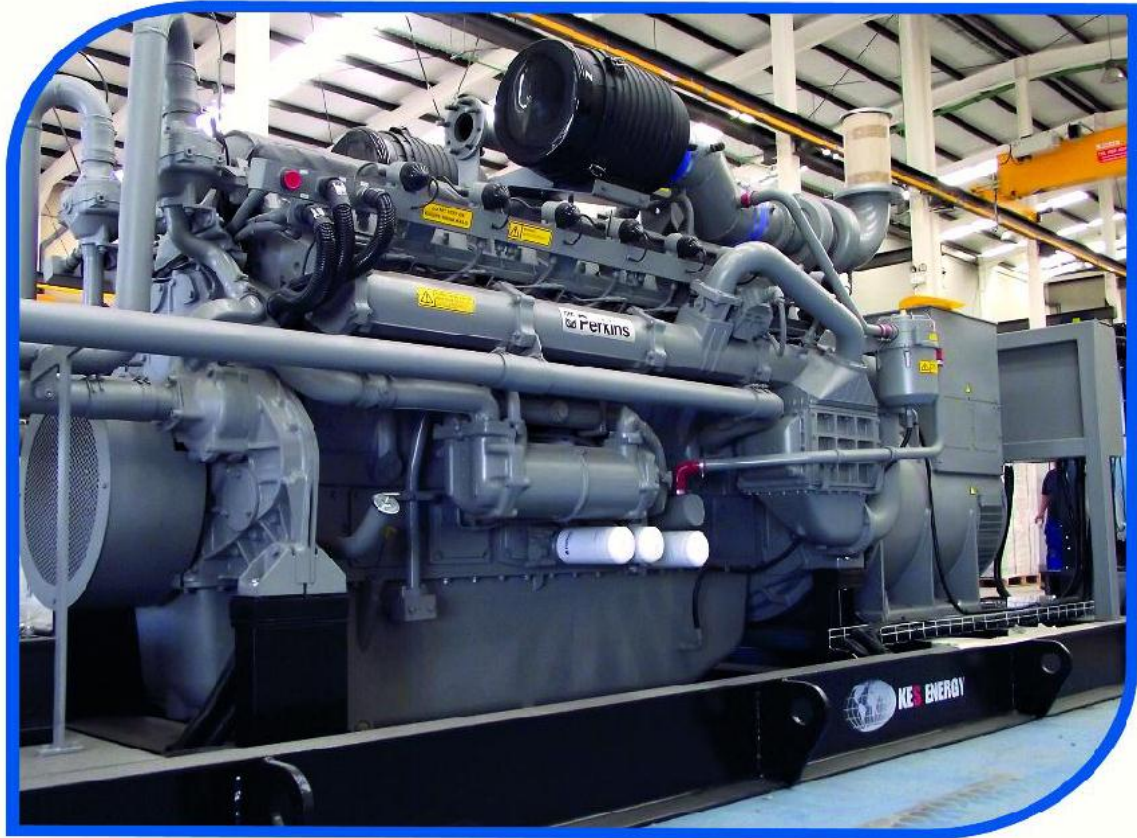
### Generator Sets 50Hz - TA-Luft

MTU Onsite Energy Type	Genset Type	Electrical Output kW <sub>el</sub>	Thermal Output kW <sub>th</sub>	Methane Number
------------------------	-------------	---------------------------------------	------------------------------------	----------------

### Generator Sets For Natural Gas Without Heat Utilisation

GB 772 N5	AoE 8V 4000	772	434	≥ 70
GB 849 N5	AoE 8V 4000	849	483	≥ 80
GB 1166 N5	AoE 12V 4000	1166	660	≥ 70
GB 1286 N5	AoE 12V 4000	1286	729	≥ 80
GB 1562 N5	AoE 16V 4000	1562	872	≥ 70
GB 1712 N5	AoE 16V 4000	1712	979	≥ 80
GB 1948 N5	AoE 20V 4000	1948	1078	≥ 70
GB 2145 N5	AoE 20V 4000	2145	1210	≥ 80

## GAS POWER POROJE



Perkins 1-MW / Gas generator



## GAS POWER POROJE



16-MW power plant project in Yazd





- Powter Poroducts from 22 kVA to 2250 kVA
- Engine: CUMMINS
- Design: 4cycle
- Fuel System: Direct Injection
- Standard Cooling System: Radiator
- 1500 rpm diesel engine
- Alternator: STAMFORD / Marelli
- Class H insulation
- 230/400 v, 3 phase, 50Hz, Pf 0.8, IP 23





Model	Standby		Prime		Engine					Dimension <sub>(mm)</sub>			Weight
	kVA	kW	kVA	kW	Type	kWm	cyl	Bore	Stroke	L	W	H	Kg
KD22C	22	17.6	20	16	X2.5G2	27	3	91	127	1600	800	1000	450
KD38C	38	30.4	35	28	X3.3G1	36	3	91	127	1800	1300	1300	480
KD44C	44	35.2	40	32	S3.8G4	43.4	4	97	128	1800	1300	1400	550
KD55C	55	44	50	40	S3.8G6	53.4	4	97	128	1800	1300	1400	550
KD66C	66	52.8	60	48	S3.8G7	64.9	4	97	128	1800	1300	1500	650
KD110C	110	88	100	80	6BTA59G5	102	6	102	120	2200	1300	1600	740
KD137C	137	109.6	100	80	6BTA59G3	135	6	102	120	2400	1200	1700	930
KD176C	176	140.8	160	128	6BTA59G5	160	6	102	120	2400	1200	1700	1450
KD275C	275	220	250	220	QSL9G3	257	6	114	145	3200	1200	2000	2100
KD330C	330	268	300	240	QSL9G5	310	6	114	145	2850	1300	2000	2100
KD400C	400	320	370	296	NTA855G4	351	6	140	152	3000	1300	2000	2450
KD550C	550	440	500	400	QSX15G8	500	6	137	169	3000	1300	2100	3200
KD700C	700	560	630	504	VTA28G5	615	12	140	152	3600	1300	2200	5700
KD900C	900	720	810	648	QSK23G3	768	6	170	170	4000	1300	2200	7100
KD1000C	1000	800	910	728	QST30G3	895	12	140	170	4000	1300	2200	6100
KD1120C	1120	896	1020	816	QST30G4	970	12	140	165	4000	1300	2200	7300
KD1400C	1400	1120	1280	1024	KTA50G3	1227	16	159	159	5700	2200	2300	10850
KD1640C	1640	1312	1400	1120	KTA50G8	1429	16	159	159	5700	2200	2300	11600
KD2250C	2250	1800	2000	1120	QSK60G4	1915	16	159	190	6500	2200	2400	15800





Model	Standby		Prime		Engine					Dimension(mm)			Weight
	kVA	kW	kVA	kW	Type	kWm	cyl	Bore	Stroke	L	W	H	Kg
KD 10 P	10	8	9	7.2	403 D 11G	8.6	3	77	81	1390	750	1000	320
KD 15 P	15	12	13	10.4	403 D 15G	13.5	3	84	90	1600	800	1000	380
KD 22 P	22	17.6	20	16	404 D 22G	20.6	4	84	100	1600	800	1100	500
KD 33 P	33	26.4	30	24	1103A 33G	31	3	105	127	1800	1000	1300	800
KD 50 P	50	40	45	36	1103A 33TG1	46.5	3	105	127	1800	1100	1400	850
KD 66 P	66	52.8	60	48	1103A 33TG2	60.5	3	105	127	1800	1100	1400	950
KD 111 P	111	88.8	101	80.8	1104C44TAG2	103	4	105	127	1800	1100	1600	1200
KD 150 P	150	120	136	108.8	1006TAG	140	6	100	127	2400	1200	1700	1450
KD 165 P	165	132	150	120	1006TAG2	150.5	6	100	127	2400	1200	1700	1500
KD 200 P	200	160	185	148	1105C E66TAG4	180.4	6	105	127	2400	1200	1700	1590
KD 275 P	275	220	250	200	1306C E87TAG6	246	6	116	136	2600	1200	1700	1845
KD 400 P	400	320	350	280	2206AE13TAG2	368	6	130	157	3000	1200	1900	2580
KD 450 P	450	360	400	320	2206AE13TAG3	413	6	130	157	3000	1300	2100	2730
KD 550 P	550	440	500	400	2506AE15TAG2	495	6	137	171	3000	1300	2100	3700
KD 660 P	660	528	600	480	2806AE18TAG1A	584	6	145	183	3500	1300	2100	4700
KD 800 P	825	660	750	600	4006 23TAG2A	711	6	160	190	3500	1300	2200	6000
KD 900 P	900	720	800	640	4006 23TAG3A	786	6	160	190	3600	1300	2200	6100
KD 1000 P	1000	800	910	728	4008TAG1A	877	8	160	190	4000	1500	2200	7100
KD 1100 P	1125	900	1020	816	4008TAG2A	985	8	160	190	4000	1500	2200	7300
KD 1385 P	1385	1108	1250	1000	401246TWG2A	1224	12	160	190	4000	1500	2500	9400
KD 1656 P	1654	1325	1500	1200	401246TAG2A	1437	12	160	190	4500	1500	2700	11000
KD 1880 P	1880	1504	1710	1368	401246TAG3A	1643	12	160	190	5700	2200	2600	11900

**STAMFORD**  
power generation

 **MarelliGenerators**



- Power Products from 10 kVA to 1880 kVA
- Engine: Perkins
- Design: 4 cycle
- Fuel System: Direct Injection
- Standard Cooling System: Radiator
- 1500 rpm diesel engine
- Alternator: STAMFORD / Marelli
- Class H insulation
- 230/400 v, 3 phase, 50Hz, Pf 0.8, IP 23



- Powter Poroducts from 94 kVA to 700 kVA
- Engine:VOLVO PENTA
- Design:4cycle
- FuelSystem:Direct Injection
- Standard Cooling System: Radiator
- 1500 rpm disel engine
- Alternator:STAMFORD/MARELLI
- Class H insulation
- 230/400 v, 3 phase , 50Hz , Pf 0.8 ,IP 23



## VOLVO PENTA

Model	Standby		Prime		Engine						Dimension(mm)			Weight
	kVA	kW	kVA	kW	Type	kWm	cyl	Bore	Stroke	L	W	H	Kg	
KD 90 V	94	75	85	68	TAD 530 GE	83	4	108	130	2000	1100	1600	920	
KD110V	116	88	100	80	TAD 531 GE	83	4	108	130	2200	1100	1600	1030	
KD145V	145	116	130	104	TAD 532 GE	127	4	108	130	2200	1200	1700	1030	
KD165V	165	132	150	120	TAD 731 GE	148	6	108	130	2600	1200	1700	1280	
KD200V	200	160	180	144	TAD 732 GE	179	6	108	130	2600	1200	1700	1429	
KD220V	225	180	200	160	TAD 733 GE	197	6	108	130	2600	1200	1700	1590	
KD275V	275	220	250	200	TAD 734 GE	241	6	108	130	2600	1200	1700	1731	
KD330V	330	264	300	240	TAD 940 GE	265	6	120	138	2850	1300	1900	1935	
KD355V	355	284	323	285	TAD 941 GE	310	6	120	138	2850	1300	1900	1935	
KD415V	415	332	375	300	TAD 1343 GE	356	6	131	158	2850	1300	1900	2440	
KD450V	450	360	410	328	TAD 1344 GE	389	6	131	158	3600	1300	2100	2580	
KD500V	500	400	455	364	TAD 1345 GE	431	6	131	158	3600	1300	2200	2730	
KD500V	500	400	450	360	TAD 1640 GE	432	6	144	165	3600	1300	2200	2730	
KD550V	550	440	500	400	TAD 1641 GE	473	6	144	165	3600	1300	2200	3030	
KD630V	630	504	570	456	TAD 1642 GE	536	6	144	165	3800	1300	2200	3280	
KD700V	700	560	636	509	TWD 1643 GE	596	6	144	165	3800	1300	2200	3560	

**STAMFORD**  
power generation

 **MarelliGenerators**

# Canopy

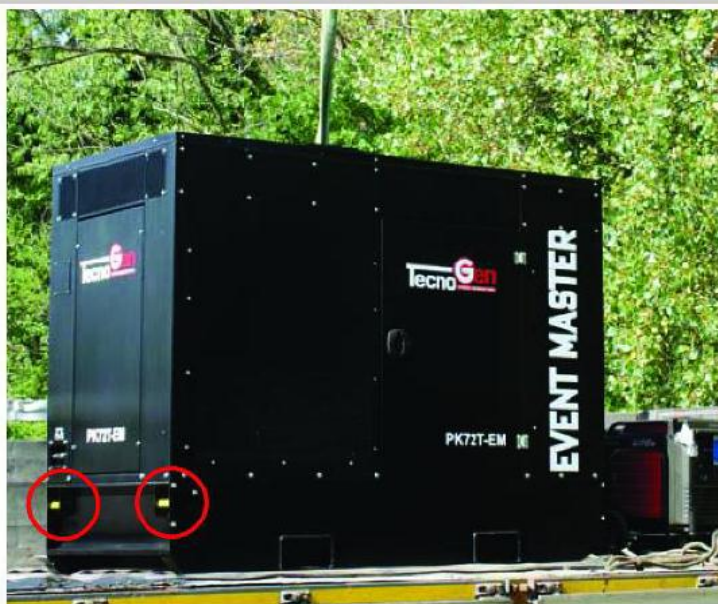




## STANDARD EQUIPMENT

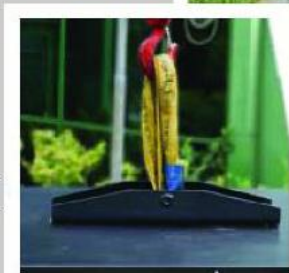
---

- **Soundproof canopy** made of polyester, thickness 60mm, anti-decayed, fireproof class 1
- **Aspiration and expulsion air against atmospheric agents**
- **Bounded base with exit liquids conduct**
- **Increased tank with Jerky cap 120 mm**
- **Forklift pockets and lateral additional supports for easy truck anchorage**
- **Base frame predisposed**  
for not approved trailer and forklift on width (from 10 to 100 KVA)
- **Handles with keys**
- **Engine heater (from 50 KVA on)** when the generating set is turned off, they maintain the engine firepoint temperature through the cooling circuit.  
Powered by main 220v
- **Wiring with connectors " automobile type "**
- **Fuel level gauge**
- **Emergency stop button**
- **Circuit breaker 4 poles**
- **Exit cable anti-mouse**
- **Anti vibrating**  
Necessary in order to reduce the vibrations produced by the generating set  
Central lifting hook with door



▲ Baseframe protection

▲ Central lifting eye





# EASY HANDLING

ⓔ The **EVENT MASTER** generating sets are designed to allow *EASE OF HANDLING*. They can be easily moved with a forklift or a crane through their central lifting eye. Their baseframe is also equipped with drag points and bumpers.



▲ Drag points on heavy duty baseframe (option)

## HEAVY DUTY BASE FRAME /CHASSIS ULTRA-ROBUSTE



ⓔ On request, the **EVENT MASTER** series can be supplied with a special **HEAVY DUTY** base frame, very solid and with drag points for safe and easy handling especially on construction sites.



**Main features:**

- Internal and external soundproof panels or cabin
- Cover or self-carrying
- Realisation by pre-constructed structure
- Taken apart for easier installation
- Customized on demand
- Soundproof insulation from 70db(A) to 55db(A) at 7 mt.
- Cables outlet
- Fuel tank connections available





CONTAINER 40 high cube 1500 Kva con recupero termico e filtro antiparticolato



CONTAINER 40" 800 kVA 60 db(A) a 7 mt. con recupero termico e quadro parallelo rete



CONTAINER 40" - 65 db(A) a 7 mt.

Model	Dimensions cm	Weight kg
Container-15	450 * 244 * 259	3400
Container-20	600 * 244 * 259	4500
Container-20Hc	600 * 244 * 289	4800
Container-30	900 * 244 * 259	5800
Container-40	1200 * 244 * 259	8300
Container-40HC	1200 * 244 * 289	9200

# Light Tower

Easy regulations of the lamps



Folding handles stabilizing feet



4 extractable, adjustable and reclinable stabilizers

## HT SERIES

MODEL	50HZ		60HZ		ENGINE TECHNICAL DATA						TANK	DIMENSIONS			MAXIMUM S ZES	WEIGHT	CONTROL PANEL			
	KVA max	KVA cont	KVA max	KVA cont	Type	cm <sup>3</sup>	KVn1500 rpm	KVn1500 rpm	Consum. 70% (l/h) 1500 rpm	Consum. 70% (l/h) 1800 rpm	Aspiration	L	CM	CM	CM	Kg				
HT PK 10/4SX	8.8	8	9	10	403D-11G3	1131	8.4	10.3	1.8	2.2	N	140	245	130	230	245	280	920	1030	MCP 120-13

## Light Tower

9m

The 4\*1000 W METAL HALIDE LAMPS, with IP65 protection can Lighten a surface of more than 4000 m<sup>2</sup>The spotlights can be turned onseparaelly through switches placed on the contro|panel







Type	Leads	400V / 50Hz Power rating [kVA] Temp.rise/Ambient temp.[°C]					Efficiency 4/4 of = 0,8 125/40 [%]	480V / 60Hz Power rating [kVA] Temp.rise/Ambient temp.[°C]					Efficiency 4/4 pf = 0,8 125/40 [%]	Inertia B3 Approx. J [kg m2]	Weight B3 Approx. [kg]
		continuous duty			Stand by			continuous duty			Stand by				
		125/40 ΔTcl.H	135/40 ΔTcl.F	80/40 ΔTcl.B	163/27	150/40		125/40 ΔTcl.H	105/40 ΔTcl.F	80/40 ΔTcl.B	163/27	150/40			

**4 poles**
**400 V @ 50 Hz - 1500 rpm**
**480V @ 60Hz - 1800 rpm**
**IP23**

MJB 160 XA 4	12	14,0	13,0	11,2	15,0	14,0	85,0	17,0	15,0	13,6	18,0	17,0	85,8	0,098	109
MJB 160 SA 4	12	17,0	16,0	13,6	19,0	18,0	85,6	21,0	20,0	16,8	24,0	23,0	86,4	0,109	129
MJB 160 SB 4	12	20,0	18,0	16,0	22,0	21,0	87,4	25,0	23,0	20,0	27,0	26,0	88,2	0,124	140
MJB 160 SC 4	12	23,0	21,0	18,4	25,0	24,0	87,5	30,0	27,0	24,0	33,0	32,0	88,3	0,135	150
MJB 160 MA 4	12	28,0	26,0	22,4	31,0	30,0	88,2	34,0	31,0	27,2	38,0	36,0	89,2	0,160	178
MJB 160 MB 4	12	32,0	29,0	25,6	35,0	34,0	88,3	40,0	37,0	32,0	44,0	42,0	89,1	0,170	188
MJB 200 SA 4	12	42,0	38,0	33,6	46,0	44,0	88,5	51,0	47,0	40,8	56,0	54,0	89,5	0,275	219
MJB 200 SB 4	12	50,0	45,0	40,0	55,0	53,0	88,7	60,0	55,0	48,0	66,0	64,0	89,3	0,301	225
MJB 200 MA 4	12	62,0	57,0	49,6	68,0	66,0	90,1	76,0	70,0	60,8	84,0	81,0	90,7	0,351	264
MJB 200 MB 4	12	75,0	69,0	60,0	82,0	80,0	90,5	90,0	82,0	72,0	115	95,0	90,9	0,426	305
MJB 225 SA 4	12	85,0	78,0	68,0	93,5	90,1	91,0	108	98,7	86,1	118	114	91,5	0,63	345
MJB 225 SB 4	12	92,0	84,4	73,6	101	97,5	91,5	114	104	90,9	125	120	92,0	0,70	350
MJB 225 MA 4	12	105	96,2	84,0	116	111	91,8	131	120	105	144	139	92,6	0,79	390
MJB 225 LA 4	12	132	121	106	145	140	92,2	158	145	127	174	168	93,0	0,92	420
MJB 250 WA 4	12	185	150	132	180	175	92,9	205	190	164	225	215	93,6	1,4	530
MJB 250 MB 4	12	185	170	150	205	195	93,0	230	215	184	255	245	93,6	1,7	590
MJB 250 LA 4	12	220	200	175	240	235	93,2	270	250	216	295	285	93,9	1,9	660
MJB 250 LB 4	12	250	230	200	275	265	93,4	300	275	240	330	320	93,9	2,1	710
MJB 315 SA 4	12	300	275	240	330	320	93,1	370	340	296	405	390	93,8	3,7	830
MJB 315 SB 4	12	350	320	280	385	370	93,4	425	390	340	470	450	94,0	4,2	920
MJB 315 MA 4	12	410	375	330	450	435	93,7	500	460	400	550	530	94,2	4,8	1060
MJB 315 MB 4	12	450	415	360	500	475	94,0	550	505	440	610	585	94,8	5,7	1200
MJB 355 SA 4	12	510	470	410	560	540	94,0	625	575	500	690	665	94,5	8,0	1250
MJB 355 SB 4	12	570	520	455	625	605	94,6	695	640	556	765	735	95,1	9,3	1550
MJB 355 MA 4	12	680	625	545	750	720	94,7	825	760	660	910	875	95,1	11,7	1800
MJB 355 MB 4	6	800	730	640	880	850	95,0	960	880	768	1055	1020	95,3	13,1	2050
MJB 400 MA 4	6	930	850	745	1025	985	95,2	1175	1080	940	1295	1245	95,7	16,3	2250
MJB 400 MB 4	6	1050	960	840	1155	1115	95,3	1320	1210	1056	1450	1400	95,7	17,0	2300
MJB 400 LA 4	6	1150	1055	920	1265	1220	95,6	1420	1305	1136	1560	1505	96,0	19,3	2550
MJB 400 LB 4	6	1300	1190	1040	1430	1380	95,8	1625	1490	1300	1790	1725	96,3	22,5	2800
MJB 450 MB 4	6	1500	1375	1200	1650	1590	95,9	1800	1660	1440	1980	1910	96,3	29,0	3200
MJB 450 LA 4	6	1650	1510	1320	1815	1750	96,0	1980	1815	1584	2180	2100	96,3	34,0	3600
MJB 450 LB 4	6	1875	1720	1500	2065	1990	96,2	2250	2065	1800	2475	2385	96,4	38,0	4000
MJB 500 SC 4	6	2000	1835	1600	2200	2120	96,1	2400	2200	1920	2640	2545	96,5	46,7	4000
MJB 500 MB 4	6	2200	2020	1760	2420	2330	96,2	2640	2420	2112	2905	2800	96,5	52,5	4400
MJB 500 LA 4	6	2500	2290	2000	2750	2650	96,4	3000	2750	2400	3300	3180	96,7	61,5	5100
MJB 560 MA 4	6	2650	2430	2120	2915	2810	96,4	3050	2800	2440	3355	3235	96,5	83,0	5200
MJB 560 LA 4	6	3200	2935	2560	3520	3390	96,5	3680	3375	2945	4050	3900	96,6	95,0	6300
MJB 630 MB 4	6	3300	3025	2640	3565	3465	96,4	3795	3480	3040	4100	3985	96,7	140	7500
MJB 630 LA 4	6	3600	3300	2880	3890	3780	96,5	4140	3795	3315	4470	4345	96,8	158	8000
MJB 710 SC 4	6	4000	3670	3200	4320	4200	96,2	4400	4035	3520	4750	4620	96,5	on request	on request
MJB 710 MD 4	6	4300	3940	3440	4645	4515	96,4	4730	4340	3785	5110	4965	96,7	on request	on request

# Control Panel

## Cummins Power Bord



PCC 3100

PCC 2100

## Deep Sea Bord



7310

8610

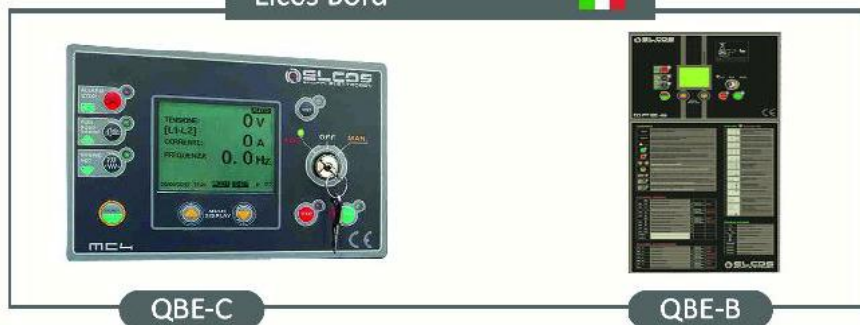
## Bernini Bord



Be42

Be-k3

## Elcos Bord

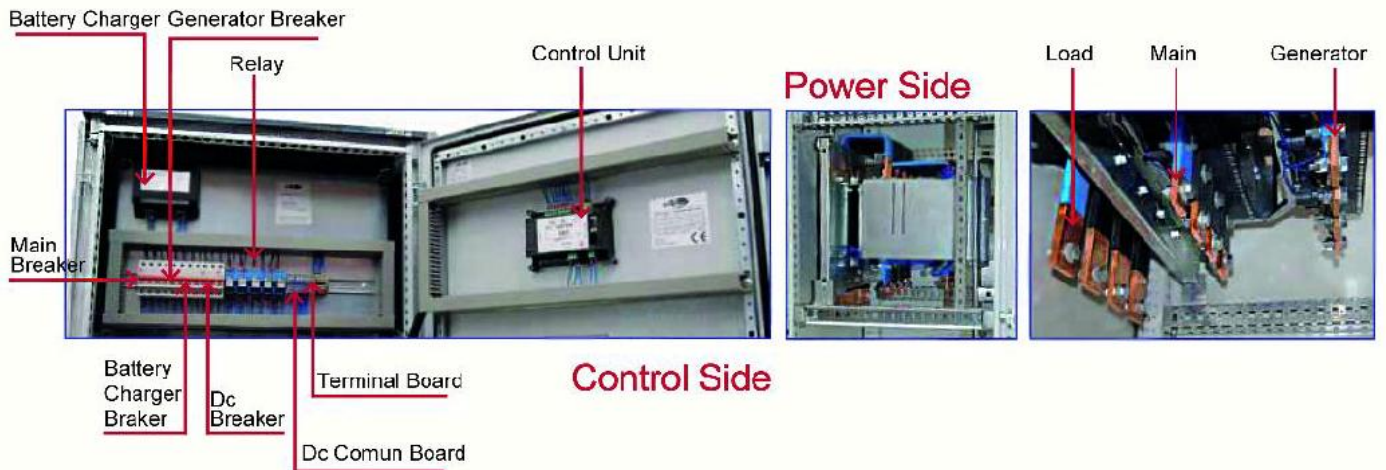


QBE-C

QBE-B



# Automatic Transfer Switch



### Recommended Cable Cross Sections

Generating Sets		Full Load Current U=400 Vac Cos $\phi$ = 0.8 (Ampere)	Current Capacity of Cable at Air (Ampere)	Cable Section YVV (NYY) 25° c (mm <sup>2</sup> )
Stand-By Power (kVA)	Stand-By Power (kW)			
275	220	396	490	2 x (3x 95 / 50)
350	280	504	570	2 x (3x120/70)
400	320	576	650	2 x (3x150/70)
414	331	596	650	2 x (3x150/70)
483	386	696	855	3 x (3x120/70)
500	400	720	855	3 x (3x120/70)
534	427	769	855	3 x (3x120/70)
550	440	792	855	3 x (3x120/70)
605	484	871	980	4 x (3 x 95/50)
710	568	1022	1140	4 x (3 x120/70)
780	624	1123	1300	4 x (3 x150/70)
820	656	1181	1425	5 x (3 x120/70)
880	704	1267	1425	5 x (3 x120/70)
925	740	1332	1425	5 x (3 x120/70)
1030	824	1483	1625	5 x (3 x150/70)
1130	904	1627	1710	6 x (3 x120/70)
1435	1148	2066	2275	7 x (3 x150/70)
1500	1200	2160	2275	7 x (3 x150/70)
1670	1336	2412	2600	8 x (3 x150/70)
1700	1360	2448	2600	8 x (3 x150/70)
2100	1680	3024	3250	10 x (3 x150/70)
2200	1760	3168	3250	10 x (3 x150/70)



### Recommended Cable Cross Sections

Generating Sets		Full Load Current U=400 Vac Cos φ = 0.8 (Ampere)	Current Capacity of Cable at Air (Ampere)	Cable Section YJV (NYY) 25° c (mm <sup>2</sup> )
Stand-By Power (kVA)	Stand-By Power (kW)			
12	9.6	17	25	4 x 2.5
14	11.2	20	25	4 x 2.5
15	12	22	25	4 x 2.5
16.5	13.2	24	34	4 x 4
17	13.6	24	34	4 x 4
21	16.8	30	34	4 x 4
22	17.6	32	34	4 x 4
25	20	36	44	4 x 6
30	24	43	60	4 x 10
33	26.4	48	60	4 x 10
44	35.2	63	80	4 x 16
70	56	101	130	3 x 35/16
90	72	130	160	3 x 50/25
110	88	158	200	3 x 70/35
132	105.6	190	245	3 x 95/50
150	120	216	245	3 x 95/50
160	128	230	245	3 x 95/50
175	140	252	285	3 x 120/70
200	160	288	325	3 x 150/70
220	176	317	400	2 x (3x70/35)
250	200	360	400	2 x (3x70/35)

Derating factor for turbocharged diesel engines with altitude:

ALTITUDE	0°C	10°C	20°C	30°C	40°C	50°C
100 m	—	—	—	0.97	0.91	0.86
500 m	—	—	—	0.94	0.88	0.83
1,000 m	—	—	0.96	0.91	0.85	0.79
1,500 m	—	0.97	0.92	0.87	0.81	0.76
2,000 m	—	0.94	0.89	0.83	0.77	0.72
2,500 m	0.96	0.90	0.85	0.79	0.74	—
3,000 m	0.92	0.87	0.82	0.76	—	—
3,500 m	0.89	0.83	0.78	—	—	—
4,000 m	0.84	0.79	0.73	—	—	—

The generator is derated for the significant increase in the ambient air temperature, because it undermines the system of forced cooling of the alternator

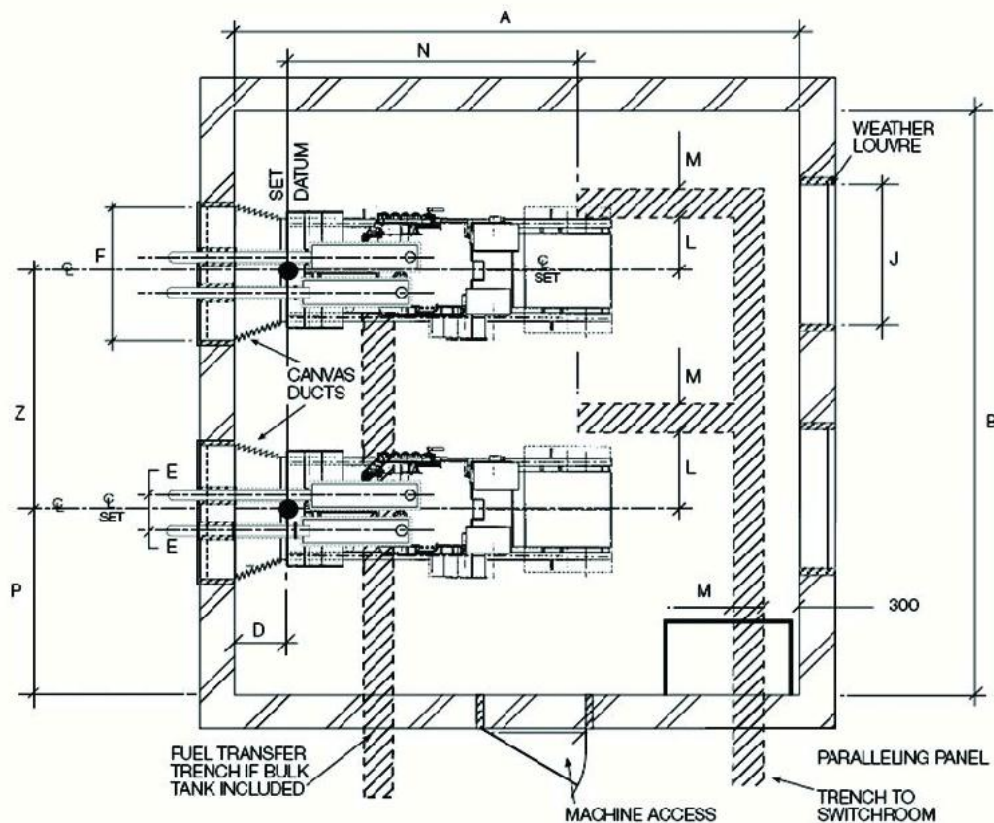
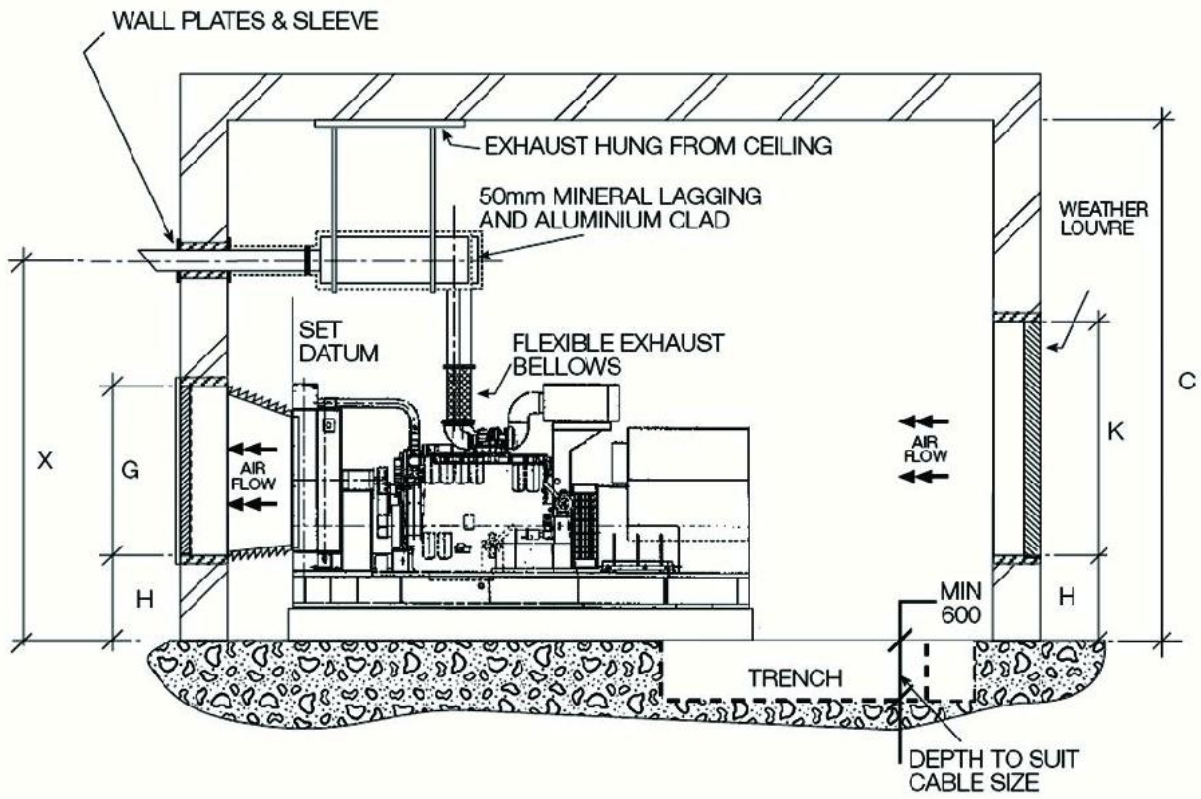
The coefficients for temperature derating of the alternator are given here:

TEMPERATURE	TYPE OF TEMPERATURE DERATING
<b>Until 40°C</b>	<b>No derating</b>
45°C	0.97
50°C	0.94
55°C	0.91
60°C	0.88

The rarefaction of the air density with increasing altitude operation also clearly affects the cooling system of the alternator:

TEMPERATURE	TYPE OF TEMPERATURE DERATING
<b>Up to 1,000 m</b>	<b>No derating</b>
from 1,000 to 1,500 m	0.97
from 1,500 to 2,000 m	0.94
from 2,000 to 2,500 m	0.91
from 2,500 to 3,000 m	0.88
from 3,000 to 3,500 m	0.84
from 3,500 to 4,000 m	0.81

## Schematic map of the diesel generator room





**KIA DIESEL SPADAN**







Head Office  
Amir Hosein Saadat  
**Kia Diesel Spadan, Masjed Seyed St.**  
**Isfahan-Iran**  
**Tel: (+98) 31\_33378800**  
**Fax: (+98) 31\_33381360**  
Mobile : 09131143312

دفتر مرکزی :  
امیر حسین سعادت  
اصفهان خیابان مسجد سید، نبش خیابان پنج رمضان  
تلفن : ۰۳۱\_۳۳۳۷۸۸۰۰  
تلفکس : ۰۳۱\_۳۳۳۸۱۳۶۰  
موبایل : ۰۹۱۳۱۱۴۳۳۱۲

[www.KiaDieselSpadan.com](http://www.KiaDieselSpadan.com)  
[info@KiaDieselSpadan.com](mailto:info@KiaDieselSpadan.com)