



Providing international capabilities  
in design, manufacturing and  
mechanical solution



*The world is changing, but our values are not.*

We are a fast growing company with the aim of producing high quality server cabinets for the local markets. Now as we are expanding our operation, we are ready to serve international markets specially Middle East and Gulf Region.

Our corporate philosophy focuses on R&D and QC because we truly believe the customers need and requirements change day by day so we have to be agile enough to respond to these needs in a timely manner. We believe that customer is our No.1 priority and we put that in to practice. So we are 100% committed to the quality and meeting our customers' requirements'

# INDEX

<b>Company introduction</b>	<b>6-9</b>
<b>19"Racks Series:</b>	<b>12-17</b>
Material	
Feature	
19" SERVER CABINET	
FRONT DOOR	
REAR DOOR	
STATIC TEST	
DYNAMIC TEST	
Wall Mount Cabinet	
<b>Accessories</b>	<b>20-23</b>
<b>Outdoor Racks</b>	<b>26-30</b>
OUTDOOR CABINET	
OUTDOOR RACKS	
<b>ATM</b>	<b>32-33</b>
Cash dispenser	

# INDEX

<b>Battery Cabinet</b>	<b>36-37</b>
<b>Kiosk</b>	<b>39-41</b>
INFORMATION KIOSK	
Self Service Kiosk	
Outdoor kiosk	
Catalogue kiosk	
Ticket dispenser	
<b>Telecommunication Cabinet</b>	<b>43-47</b>
<b>Projects</b>	<b>49-55</b>
IP 42 NETWORK CABINET	
ALUMINIUM STRUCTURE CABINET	
SUB RACKS	
TICKET VENDING MACHINE	
GAS DISPENSER	
CNG DISPENSER	
U P S BOXES	
Medical BOXES	
<b>Exhibitions</b>	<b>56</b>



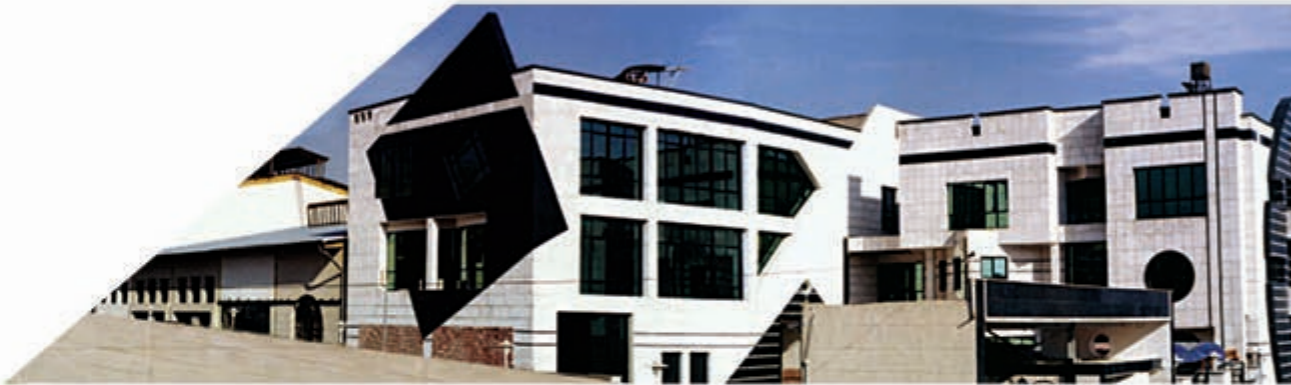
## Brief Company Overview

Private Joint Stock Company | Registration Number: 335696|

With the vision of becoming one of the leading sheet metal forming manufacturer in Iran, Mahan System was established in 1998. Since then the company has been growing by becoming more and more customer-oriented meeting the ever-changing requirements of its clients. Being able to offer customized solutions to various industrial groups, the company has diversified into various commercial divisions each specializing in specific area.

As part of the Mahan System growth development plan, Mahan System Iria was register in 2008 with the mission of introducing high quality server & networking cabinets to local IT companies, as this industry has been facing rapid growth during the last few years, and the need for locally manufactured cabinets is felt more than ever.

Being highly price and quality competitive, Mahan System Iria has been able to compete effectively with local and foreign rivals, being able to take a sizable local market share. As part of its expansion plan, «The Global Reach», the company has started its overseas operation by considering export of its wide array of solutions to the regional countries.



## Quality Policy

With 15 years of experience, the company is able to provide defect free products and quality services which conform to international standards, and customer specification.

The stringent quality inspection program conducted by highly skilled technical staff assures of the quality presented to the customers in addition to the quality machinery used such as CNC punch and bending, and others.

Quality has never been compromised, and that has been the reason behind the company success, and its fast growing company base.

## Our services

Mahan System Co. provides various electronic boxes such as:

- Telecommunication Cabinets
- Indoor and Outdoor Racks
- Wall Mount Enclosure
- Kiosks
- ATM and TVM
- Others including: Battery Cabinet, Medicine Racks, Open Racks, Automobile accessories,...



## Operating Divisions:

### Engineering & Technical Div. (R&D)

This division is responsible for design and development of new cabinets based on new industry trend and also providing customized solution based on customer exact requirements



## Commercial Div.

The commercial division taps on highly qualified sales and marketing staff familiar with domestic and overseas sales and trade transaction. Moreover, the division is responsible for liaising with current customers to find out more about possible issues and recommendations for future improvement, and also seek new markets for future expansion.

The division's core philosophy is that "Customer is our number "1" Priority"

## Planning & Quality Control Div.

Continuous programs are provided to various divisions based on their specialty and immediate need, ensuring the quality operation of the company as a whole. The manufacturing personnel also go through special machine operation and safety training courses. Bringing the staff up-to-date has allowed the company not only to experience rapid growth but also be able to retain its most valuable asset, meaning its skilled staff.

## Personel training

Continuous programs are provided to various divisions based on their specialty and immediate need, ensuring the quality operation of the company as a whole. The manufacturing personnel also go through special machine operation and safety training courses. Bringing the staff up-to-date has allowed the company not only to experience rapid growth but also be able to retain its most valuable asset, meaning its skilled staff.





### Production site

The 4000sq Meter factory located in KhoramDasht Industrial City with 75 people is well equipped with state-of-the-art machineries such as bending, CNC punching, spot welding and others. Moreover, the highly trained and skilled labor force has ensured the optimal quality desired by the industry, in addition to the production efficiency achieved. The production process is based on stock-to-order and make-to-order to fulfill the immediate and special need of the clients.



### Washing section

All of the accessories washed with warm water and mild liquid detergent – followed by a fresh water rinse to maintain the attractive appearance of the powder cured film. Therefore the coated surface is free of oil-grease-dust mill and metal oxides.



### Painting site

Optimal painting is attained by using special Convection oven, and electrostatic spraying. Skillful workforces are used in the painting site to achieve the highest quality and required thickness.



### Laboratory system

Our experts in the laboratory use the best scientific method for reaching the best possible painting and washing solution by using special high tech painting equipment like convection oven and other needed equipment and facilities.



### Assembly Line

All the products are assembled by skillful staff with special care, making sure the final product would be flawless of defects. The products are packed carefully in Bubble Nylon or carton, and put on pallets for transportation to any parts of the world



### Laser Machine LC-2415

Ultra high-speed processing of thin material. Table type to facilitate loading and unloading



### Punching Machine ARIES-225 C.N.C



family Racks



19" Racks Series

IP20





**Material**

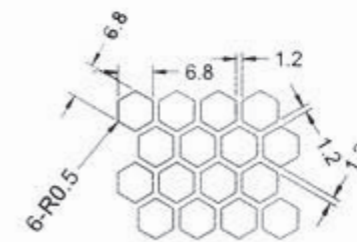
SPCC cold rolled steel.  
 Thickness : mounting profile 2.0 mm,  
 mounting angle 1.5 mm, others 1.2mm.  
 Color:RAL9004

RAL9004	RAL9002	RAL7035

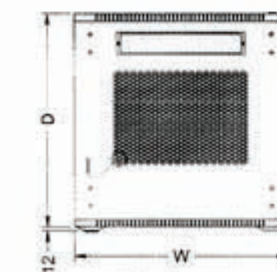


**Feature**

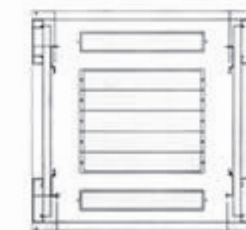
- Exquisite design with precise dimension and craftsmanship
- Special durable and secure glass door
- Optional vented front and rear door
- Blue Zinc mounting profiles, free of static
- Adjustable feet and heavy duty castors are both available
- Cable entry on the top cover and bottom panel with adjustable sizes
- Optional plinth for fix installation
- Efficient and reliable assembling and installation with buying kit
- IP: 20
- Removable side panels for ease of maintenance
- Depth: 600mm, 800mm, 1000mm
- Height: 12U up to 47U
- Unique hexagonal reticular high-density vented front and rear door enable equipment protection, ventilation and reliable operation
- High secure locking system against unauthorized access
- Static loading: 800Kg
- Material: 100% steel frame and panels
- Electrostatic powder coating and zinc plating
- Various optional accessories
- Comply with IEC60297-2



Ventilation Rate %71



Top Cover



Bottom Panel

Code NO.	Capacity (Unit)	Width (mm)	Depth (mm)	Height (mm)
MSI R1205	12	600	800	648
MSI R1405	14	600	800	737
MSI R1805	18	600	800	915
MSI R2003	20	600	600	1004
MSI R2205	22	600	800	1093
MSI R2703	27	600	600	1315
MSI R2705			800	
MSI R2706			1000	
MSI R3705	37	600	800	1760
MSI R3706			1000	
MSI R4006	40	600	1000	1893
MSI R40806		800		
MSI R4203	42	600	600	1982
MSI R4205			800	
MSI R4206			1000	
MSI R42806			800	
MSI R4405	44	600	800	2071
MSI R4406			1000	
MSI R4705	47	600	800	2205
MSI R4706			1000	

## FRONT DOOR



## REAR DOOR

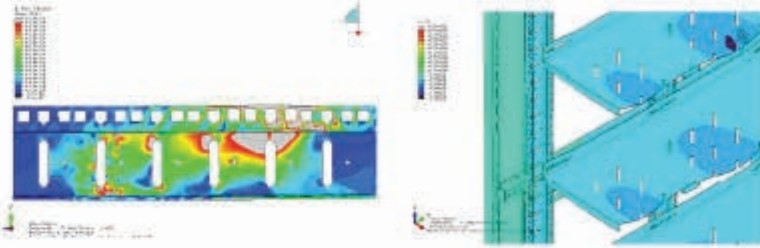
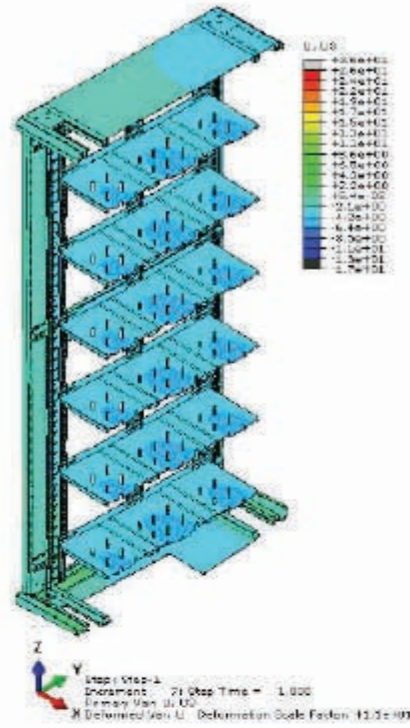




**STATIC TEST**

- Done with Abaqus software
- Loading 1200kg
- Checking pressure on the plates and profiles

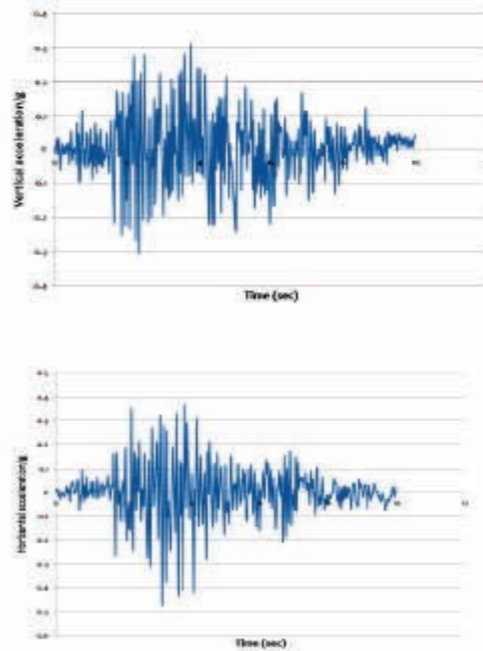
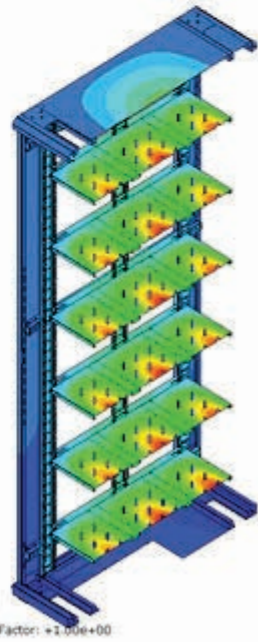
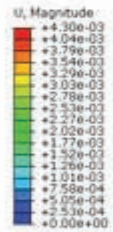
Result: Up to 1200kg can be loaded in Mahan racks without any deformation of the structure



**DYNAMIC TEST**

- Done with Abaqus software
- Applying horizontal and vertical force
- Check out the rack resistance against vibration with 0.49g horizontal acceleration in 3.35s and 0.31g vertical acceleration in 3.12s

Result: it shows resistance of Mahan racks against earthquake and max. effect is occurred in 3.35s and its 4.3mm



**Wall Mount Cabinet**



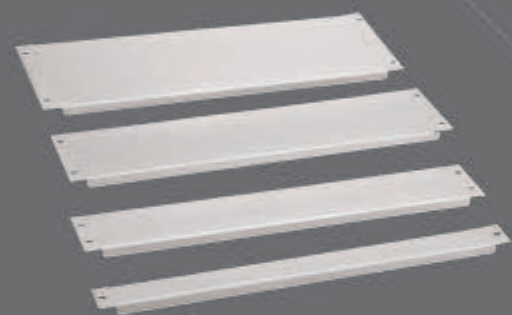
**Feature**

- Capability of fan installing ranges 1 to 2.
- Capability of complete ventilation of the air in the rack.
- Capability of passing cables from the top or the bottom or the sides of the rack.
- Capability of changing the adaptors locations toward the rack depth.
- Capability of opening front door from the left or right side.
- Capability of choosing the front door in from of glass or acrylic.
- Capability of openness and separation of the side doors and complete availability to the rack inner equipments.
- Electrostatic color coverage on all pieces.

Code NO.	Capacity (Unit)	Width (mm)	Depth (mm)	Height (mm)
MSI R600	6	600	400	310
MSI R701	7	600	450	386
MSI R901	9	600	450	475
MSI R903			600	



Accessories



**L Rail**

Fastened to mounting rails for supporting equipment.

**Material**

SPCC cold rolled steel t1.5.

**Surface Finish**

Degreasing, phosphoric, powder coated.

**Color**

RAL9004 RAL7035



Model No.	Specification	Use
MSI LR03	60L rial	600-depth cabinets
MSI LR04	80L rial	800-depth cabinets
MSI LR05	96L rial	960-depth cabinets

**Adjustable Keyboard panel with small round lock**

**Material**

SPCC cold rolled steel t1.2/14"2-section slide

**Surface Finish**

Degreasing, phosphoric, powder coated.

**Parameter**

Flexing length:210MM Loading capacity:20KG.

Model NO. TK01



**Fixed Shelf**

Used for placing equipment

**Material**

SPCC cold rolled steel t1.2.

**Surface Finish**

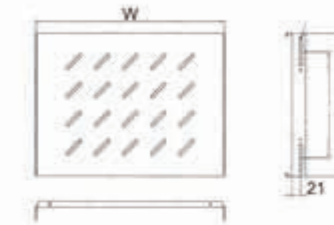
Degreasing, phosphoric, Powder coated.

**Loading capacity**

60 KG

**Color**

RAL9004 RAL7035



Model No.	Specification	Dimension (mm)		Use
		W	D	
MSI TF01	60 Fixed shelf	472	350	19" installation for 600-depth cabinets
MSI TF02	80 Fixed shelf	472	550	19" installation for 800-depth cabinets
MSI TF03	96 Fixed shelf	472	731	19" installation for 96/1000-depth cabinets

**Sliding Shelf**

Used for all depths.

**Material**

SPCC Cold rolled steel

**Loading Capacity**

20kg

**Color**

RAL9004



**19" LIGHT PANEL**

- Attaches anywhere within the cabinet by the help of an adhesive tape High output
- Low power consumption (10 W)

Model NO. L01



**19" TEMPERATURE CONTROLLER**

ON/OFF control

Input specification → Basic specification : NTC (Thermistor)  
Option: RTD (DIN pt100Ω)

Indication range → NTC Sensor type : -40.0 ~ 99.9°C (40~212°F)  
RTD Sensor type : -99.9 ~ 99.9° (148 ~ 148 F)

Includes various delay function.

Auto/Manual Defrost selection function , start-up delay

Of compressor , Re-operation delay , minimum ON time,

Delay of defrost-end, operation delay of evaporation-fan

Input correction function

It is available to set operation period for protection compressor in error.

Model NO. T01

**Cable Management:**

Make your cable looms neat, organized, easy to manage, and easy to troubleshoot with this all-metal 1U cable organizer.

Simply slip cables into the hooks and route them to their destinations.



**AC Power**

Code NO.	Outlets No.	Installation	Remark
MSI P03	3-ports	Horizontal	Only for wall-mounted
MSI P05	5-ports	Horizontal	-
MSI P06	6-ports	Horizontal	-
MSI P07	7-ports	Horizontal	With fuse
MSI P08	8-ports	Horizontal	With On/Off key
MSI P09	9-ports	Horizontal	-
MSI P16	16-ports	Vertical	With fuse



**Blanking Panel**

For 19" cabinets

**Material**

SPCC cold rolled steel t1.2.

**Surface Finish**

Degreasing, phosphoric, powder coated.

**Color**

RAL 9004 RAL7035



Model No.	Specification	Height (U)
MSI B01	1U Blanking panel	1U
MSI B02	2U Blanking panel	2U
MSI B03	3U Blanking panel	3U
MSI B04	4U Blanking panel	4U

## OutDoor Racks



## OUTDOOR CABINET

Manufactured according to Customers exact drawing and specifications  
 Strong resistance to ever-changing weather conditions  
 Degree of protection: IP54



### Material :

- o Steel sheet .ALSS.... is optional
- o Front door: thickness 2.0st
- o Side panel: thickness 1.5st
- o Finish : electrostatic powder coating (RAL 7035) is optional
- o Easy to assemble due to efficient design
- o Damage free transport
- o Fixed on palette
- o Hot air exchange by side panel ventilators
- o Protection category :  
 IP(isolating protection)=54.  
 IP standard is according to IEC solutions.

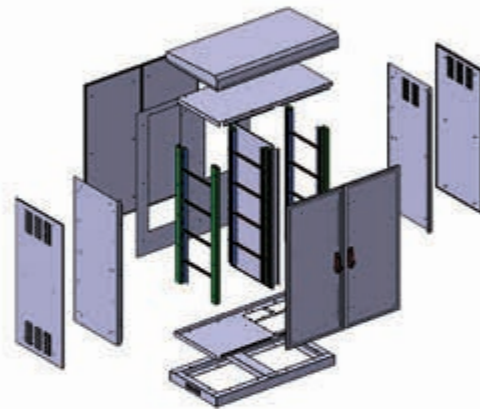
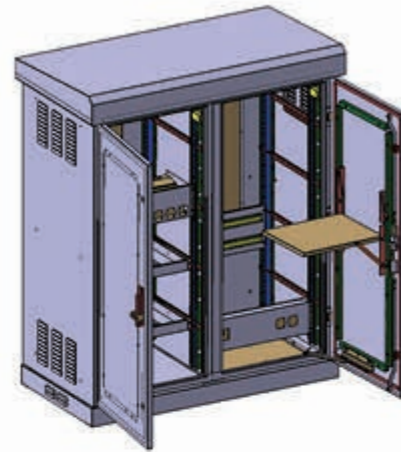


## OUTDOOR RACKS



**OUTDOOR CABINET**

Manufactured according to Customers exact drawing and specifications  
 Strong resistance to ever-changing weather conditions  
 Degree of protection: IP54



**19"OUTDOOR CABINET**

Manufactured according to Customers exact drawing and specifications  
 Degree of protection: IP54



**Cooling**

Voltage	220 Volts 1 Phase
HZ	50
Amps at Full Load	2 Amps
BTU/Hour	1200 (350 Watts)
Max Ambient Temp	55°C
Weight	24 KG
Dimensions (HxWxD)	400x230x190 mm
Body Color	Static Silver



**Cooling**



Voltage	220~230 Volts 1Phase
HZ	50
Amps at Full Load	3 Amps
BTU/Hour	6000 (1750 Watts)
Max Ambient Temp	55°C
Weight	55 KG
Dimensions (HxWxD)	740x430x290 mm
Body Color	Static Silver

## Cooling



Voltage	220~230 Volts 1Phase
HZ	50
Amps at Full Load	3 Amps
BTU/Hour	7000 (2000 Watts)
Max Ambient Temp	55°C
Weight	50 KG
Dimensions (HxWxD)	325x700x560 mm
Body Color	Static Silver



Voltage	220~230 Volts 1Phase
HZ	50
Amps at Full Load	6 Amps
BTU/Hour	8000 (2345 Watts)
Max Ambient Temp	55°C
Weight	50 KG
Dimensions (HxWxD)	880x460x250 mm
Body Color	Static Silver

# ATM





### ATM

Manufactured according to Customers exact drawing and specifications (Pro cash)



### Cash dispenser

Its successful design blends harmoniously into any environment where effective advice, information and presentation are needed. Modern communications and technology with a new look. Additional installation of a sound system is possible.

Height: 1655.0mm  
Width: 790.0mm  
Depth: 740.0mm

Capability of using at the banks ,markets ....

Capability of card reader ,monitor and printer installing.

The bottom mid section is a strongbox and top section is cash dispenser.

Strong box is including of two model door:

Security door with a code lock (thickness 15.0) and perforated door with a cylinder lock (thickness 2.0)

And top section is including one round door with a cylinder lock.

Capability of cable entry at rear panel.



### Coating

Electrostatic powder coating (RAL 5007)  
All of inner accessories are yellow zinc plated.

### Material

Front door , side panels and rear panel are steel sheet (thickness 2.0)  
Strongbox is steel sheet (thickness 15.0)



▲ Battery

Cabinets



**Battery cabinet**

- o The ability of access to the inside of the case from every four side.
- o The ability of opening the doors with rawer lock.
- o With strong solidity for keeping heavy battery (s).
- o With air-cleaner punches in four sides and floor for air ventilation.
- o With the place for passing the cable.
- o With four legs.
- o Designed for keeping different batteries.
- o With system of powder color coverage in electrostatic.
- o Material: 100% steel frame and steel panels.
- o Standard RAL9002 and various color options.
- o Finish: Electrostatic powder coating and zinc plating.



Floor	Length (mm)		Width (mm)		Heigh (mm)	
	Inner	Outer	Inner	Outer	Inner	Outer
One Floor	510	550	380	430	280	350
Two Floor	530	570	380	420	280	720
Three Floor	530	570	380	420	280	970
Four Floor	530	570	380	420	280	1330



**Battery cabinet**

- o The ability of access to the inside of the case from every four side.
- o The ability of opening the doors with rawer lock.
- o With strong solidity for keeping heavy battery (s).
- o With air-cleaner punches in four sides and floor for air ventilation.
- o With the place for passing the cable.
- o With four legs.
- o The ability of setting the racks on each other in the one floor ones.
- o Designed for keeping different batteries.
- o Material: 100% steel frame and steel panels.
- o Standard RAL9002/7035/7031/7016 and various color options.
- o Finish: Electrostatic powder coating and zinc plating.

Floor	Length (mm)		Width (mm)		Heigh (mm)	
	Inner	Outer	Inner	Outer	Inner	Outer
Four Floor	885	930	489	538	305	1670
Four Floor	1201	1250	551	600	305	1670
Five Floor	885	930	489	538	305	1900



# Kiosk

## INFORMATION KIOSK

Manufactured according to Customers exact drawing and specifications



MSI 081709



MSI 081710

Kiosks are on hand 24-7 to provide up to the minute information, attract interest, and receive requests, messages, reservations and orders. sports, arts, entertainment, administration, transport, industry trade and hotel suitable applications are everywhere!



MSI 081708



MSI 081707

### Self Service Kiosk



Shahrpardaz self service kiosk can be employed to automate many of activities and workflows in governmental and non-governmental sectors. Many optional type of equipment can be additionally installed in these kiosks for various applications. Equipments such like:

Barcode scanners to read barcodes on vouchers, bills, Receipts and etc ...

Hybrid card readers, bill and coin acceptors for payments.

Various types of printers in different sizes to print receipts, bills, forms and other documents.

CD/DVD Dispenser to dispense electronic and multimedia contents.

Card dispensers to dispense tickets, magnet and smart cards and so on.

### Outdoor kiosk



This Kiosk can be used in open space and has a 55 inch touch screen LCD.

Some advantages of this kiosk are:

It can be used for multimedia advertisement.

Touch screen LCD enables each individual to interact with multimedia application and receive his/her ideal information.

It is portable and can be moved easily.

### Catalogue kiosk

This Kiosk Has a 32 inch touch screen LCD and has a multimedia software application that enables people to leaf pages and see multimedia contents.



### Ticket dispenser

Capability of using in banks and markets ...

Variety model and capability cable easy entry at the bottom of structure.

Beautiful structure and easy removed and assembly at different positions.

Capability of door locking.

Dimension:

Length: 1137.3mm

Width: 252.0mm

Electrostatic wrinkle powder coating (RAL 7035).



MSI 081711

MSI 081712

# Telecommunication Cabinet

## BTS CABINET



- Total height : 1993.75
- Width: 604.5
- Useful Depth: 392.0
- All of the inner accessories in this rack are zinc plated.
- Use different models of subracks in BTS rack including TRX, MRT and BSC .
- Sliding Sub racks are easy removable and fastening by screw bolt.
- heavy duty steel cross bars are bolted with BTS rated bolts at each edge of corner joints enabling cabinet carry even more static loads.
- All of the accessories can be used with a BTS cabinet. This cabinet provide easy access to equipment via the removable roof , sides and front /rear door.
- Triangular lock insert. The handle can only be locked if the door completely closed.
- Rugged galvanize cases
- Steel reinforce cross bars in each side of the cabinet including top and bottom
- Coating :electrostatic powder (RAL 7035)





#### 19" RACK (TELECOMMUNICATION)

- Light and strong frame
- Depth :600mm
- Height: 40U
- Sufficient ventilation ensures that the equipment would not be over heated
- Highly secure locking system against unauthorized access
- 1500kg static load carrying capacity (with adjustable feet)
- Standard RAL7032 and various color options
- Thickness: Mounting profile 2.0 mm , mounting angle 1.5mm , others 1.2mm
- Material: 100% steel frame and steel panels
- Finish: Electrostatic powder coating and zinc plating



#### CONTROL PANEL

Manufactured according to Customers exact drawing and specifications (Arian Asansor)  
A product of Arian Asansor. First microprocessor control panel manufacture



**ETSI Racks (19", 21", 23")**

The ETSI (European Telecommunication Standard Institute) define cabinets for telecommunications applications based on the metric norm.



- This rack define for the telecommunication based on the metric norm.
- This rack offered with standard dimensions of length :600.0mm, width 600.0mm,height:2141.0mm(44u).
- Cable entry access panels at top and bottom.
- Rear panel and front door are optional.
- Perforated or glazed metal front door .
- Option: welded frame with the stronger structure.
- Easy customized to individual requirements .
- Easy to assemble due to efficient design .
- Material:
- Side panel,front column,front door and rear panel supporting thickness are 1.5.
- Roof and bottom section are 2.0 thickness.
- Rear panel fastened by screw bolt.
- Front door lock by triple point lock.
- Zinc plated or electrostatic powder coated .
- All round accessibility.

**ETSI Racks (19", 21", 23")**

- 19" universal whole pattern for front and side mounting of equipment
- Easy cable management through large cut outs in the frame and easy cable conducts by cable clamps mountable on all faces
- Base openings ready for individual positioning of the frame
- Base equipped with feet (standard) or castors (optional)
- Electrostatic powder coating (standard RAL 7032)
- Material: 2mm steel



Height (Unit)	Single Frame Open Rack	Double Frame Open Rack	Fixed Frame Open Rack
28	MSI-RLYS-28-U	MSI-RLYD-28-U	MSI-RLYF-28-U
42	MSI-RLYS-42-U	MSI-RLYD-42-U	MSI-RLYF-42-U





## Projects



### 19" NETWORK CABINET

Depth: 600mm, 800mm, 1000mm

Height: 22 up to 44U

Mouting depth accommodates servers, 4Ps, storage devices and other network equipment from all major manufactures

Highly secure locking system against unauthorized access

Complete size range

800kg static load carrying capacity (with adjustable feet)

Degree of protection: IP42

Material: 100% steel frame and steel panels

Electrostaic powder coating and zinc plating

RAL9004	RAL9002	RAL7035
		



## ALUMINIUM STRUCTURE CABINET

### Configuration options:

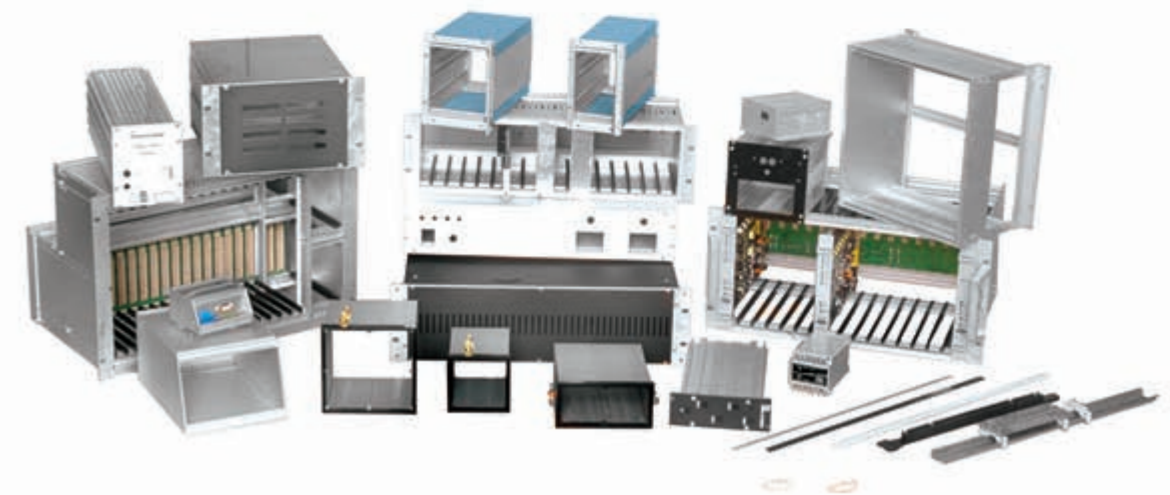
- Indoor rack.
- Material: Steel. Aluminum .
- Width: 600mm, 800mm, 1000mm
- Depth: 600mm, 800mm, 1000mm
- Height: available of 12U up to 51U.
- Die cast corner pieces.
- Self guiding and inter locking aluminum frame joints.
- Unlimited number of cabinets, side by side.
- Capability of fan installing 1 to 4.
- Capability of cable entry at rear and plinth.
- Capability of using two model adaptors with cable entry
- Capability of tray installing inside and outside of adaptors .
- 180° hinge.
- Side panel:  
Single point central lock or double drawer handle
- Wheels and castors with lock or adjustable feet from 25.0mm to 40.0mm.
- System adaptors:  
By using the system adaptor, the principal of two attachment levels outer and inner within this enclosure system is easily achieved.
- 6-way socket strip with switch:  
The socket strip has a 3m long connection cable , and is conveniently housed in the bottom of work station.
- Electrostatic powder coating (RAL 7035).

RAL9004	RAL9002	RAL7035
		



## SUB RACKS

We offer an extensive range of products for industrial pcs (19") rack mount versions in 1,2 and 4 unit through to solutions for direct mounting plates. 19" rack mount system for the horizontal installation different kind of devices like storage devices and boards.....



**TICKET VENDING MACHINE**

Manufactured according to Customers exact drawing and specifications (shahr pardaz)



**GAS DISPENSER**

Manufactured according to Customers exact drawing and specifications (Teknotar)



**BANK'S KIOSKS**

Manufactured according to Customers exact drawing and specifications (Shahr Pardaz)



**GAS DISPENSER**

Manufactured according to Customers exact drawing and specifications



**CNG DISPENSER**

Manufactured according to Customers exact drawing and specifications



**CNG DISPENSER**

Material:  
Plastic front panel  
Aluminum rear panel.  
Coating: electrostatic powder  
All inner accessories are zinc plated.



**UPS BOXES**

Available in different sizes and models and customized up on customer request.  
Honey comb and perforated side panels for hot air exchange.  
All of the material are optional.  
Capability of using a beautiful synthetic plastic material instead front panel.  
Electrostatic powder coating(RAL 7035).



**Medical BOXES**

Capability of installing on trolley and ambulance .  
Dimensions:  
Length : 330.0mm  
Width : 135.0mm  
Height: 256.0mm  
Material : Al.  
Electrostatic powder coating(RAL 9016).  
Customization production



### Exhibitions

Participation in different exhibition for presenting new products and showing of product's quality.

Participated exhibitions such as:

- IRAN ELECOMP AND TELECOM
- DUBAI GITEX EXHIBITION

#### This year's exhibitions:

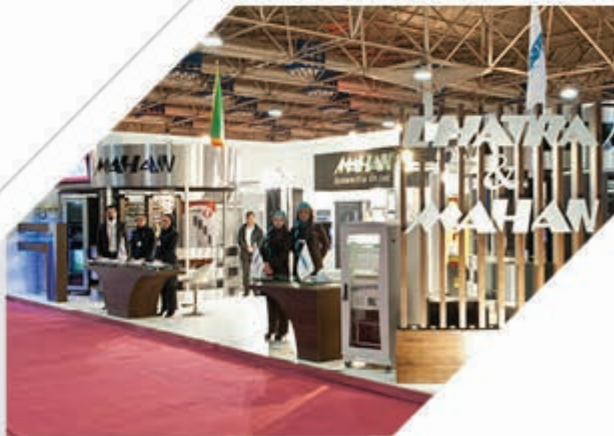
- Gitex 2011



- IRAN TELECOM 2011



- IRAN ELECOMP 2011



**MAHAN**  
System Iliia Corporation Inc.

Providing international capabilities  
in design, manufacturing and  
mechanical solution





Providing international capabilities  
in design, manufacturing and  
mechanical solution